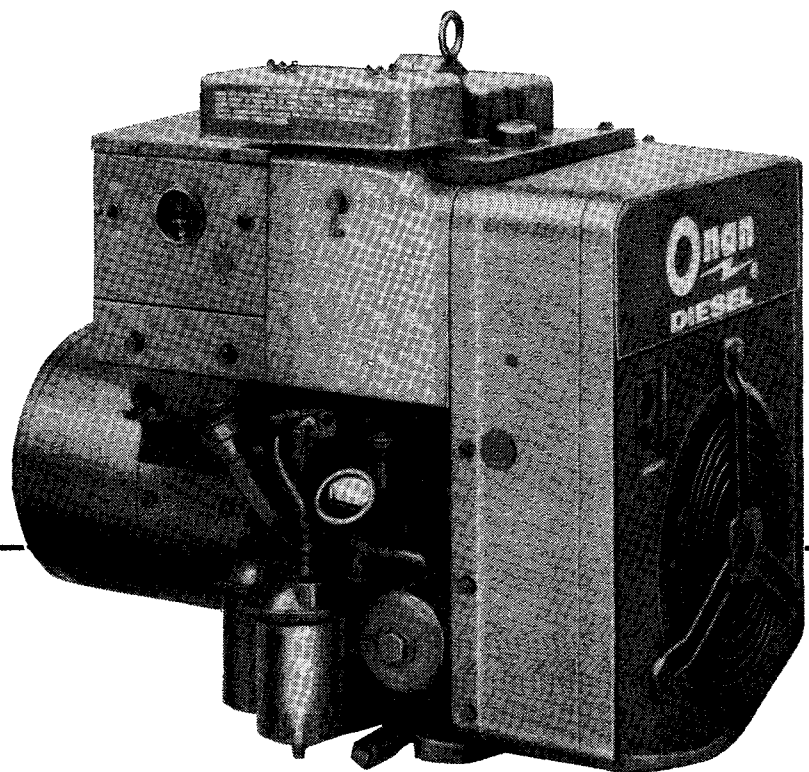


The following catalog
has gaps in its page
numbers, or doesn't
have any numbers.
We have chosen to
leave the page
numbering in the
order that Acrobat
assigns it.

Onan

Parts Manual

**DJA
GenSet**



967-0224
7-89 (SPEC A-V)
Replaces 7-83 (Spec A-V)
Printed in U.S.A.

General Information

For parts or service, contact the dealer from whom you purchased this equipment or refer to your Nearest Authorized Onan Parts and Service Center.

To avoid errors or delay in filling your parts order, always give the MODEL, SPEC NO. and SERIAL NO. from the Onan nameplate.

The diagram shows a rectangular nameplate with two circular mounting holes at the top. The Onan logo is prominently displayed. Below the logo is a large rectangular box labeled "MODEL AND SPEC NO.". Below that is a smaller rectangular box labeled "SERIAL NO.". The bottom right corner of the nameplate is shown with a wavy line, indicating it is part of a larger sheet.

M-1149

For handy reference, insert "YOUR"
nameplate information in the spaces above.

INDEX

TITLE	LOCATION
INTRODUCTION.....	A4
GENERATOR SET DATA TABLE.....	A4
STANDARD PARTS SECTION	
Air Cleaner and Fuel Filter	B2,B3
Anti-Flicker and Stop Solenoid	B6,B7
Camshaft	A8
Control	B12,B13
Crankshaft	A8
Cylinder Block and Oil Base	A6,A7
Exhaust System	B5
Flywheel	A8
Gearcase	A13
Generator	B10,B11
Governor	A14
Head, Cylinder	A10,A11
Housing, Air	B8,B9
Injection System	B4
Oil System	A12
Piston and Rod	A9
Service Kits and Miscellaneous	B13
SPECIAL PARTS SECTION - CONTRACTOR MODELS	
Air Cleaner and Fuel Filter	C1
Control	C2
Cylinder Block and Oil Base	B14
Exhaust System	B14
Gearcase	B14
Oil System	B14
OPTIONAL PARTS SECTION	
Cleaner, Oil Bath Air	D2
Control, Continuous Glow Plug	D6
Duct, Air	D2
Duct and Shutter, Air	
Internal Spring Type	D5
External Spring Type	D4
Housing and Skid Base	D3
Miscellaneous Optional Parts	
Filter, Oil (Heavy Duty)	D10
Heater, Oil Base	D10
Muffler, Critical (Housed Sets)	D10
Switch, High Air Temperature	D10
Panel, AC Meter (Housed Sets)	D7
Skid and Battery Rack	D8
Tank, Fuel	
Housed Sets	D9
Unhoused Sets	D10

Introduction

This catalog applies to the DJA Generator Sets as listed in the Generator Set Data Table. The model designation shown began during 1969. Previously, the model designations used a zero in place of the decimal in the kilowatt rating (Example: 2.5DJJA was formerly 205DJJA and 3.0DJJA was formerly 30DJJA). Parts are arranged in groups of related items and each illustrated part is identified by a reference number corresponding to the same reference number in the parts list. Unless otherwise mentioned in the description, parts are interchangeable between models. Parts illustrations are typical. Using the model and specification number from your generator set nameplate, select the Parts Key Number (1, 2, etc., in the last column) that applies to your set. This Parts Key Number represents parts that differ between models. Right and left sides are determined by facing the engine end (front) of the set.

Generator Set Data Table

MODEL AND SPECIFICATION	ELECTRICAL DATA					PARTS KEY NO.
	WATTS	VOLTS	HERTZ	WIRE	PHASE	
2.5DJJA-51R/*	2,500	120	50	2	1	1
2.5DJJA-52R/*	2,500	240	50	2	1	1
2.5DJJA-53R/*	2,500	120/240	50	3	1	1
2.5DJJA-53CR/*	2,500	120/240	50	**	1	1
2.5DJJA-55R/*	2,500	240	50	3	3	1
3.0DJJA-1R/*	3,000	120	60	2	1	1
3.0DJJA-2R/*	3,000	240	60	2	1	1
3.0DJJA-3R/*	3,000	120/240	60	3	1	1
3.0DJJA-3CR/*	3,000	120/240	60	**	1	1
3.0DJJA-4R/*	3,000	120/208	60	4	3	1
3.0DJJA-5R/*	3,000	240	60	3	3	1
3.0DJJA-1R/4*	3,000	(120 AC) (32 DC)	60	2	1	2
3.0DJJA-3R4/*	3,000	(120/240AC) (32 DC)	60	3	1	2
2.5DJJA-224R/*	2,500	24 DC	DC			3
3.0DJJA-232R/*	3,000	32 DC	DC			4
3.0DJJA-FB/*	3,000	120/240	60	**	1	1
3.0DJJA-FJ/*	3,000	120/240	60	**	1	1
4.0DJJA-FJ/*	4,000	120/240	60	**	1	5
2.5DJJA-53CE/* 3.0DJJA-1E/* (Formerly 3DJJA-1E2236/*) 3.0DJJA-3CE/* (Formerly 3DJJA-3E2236/*)	CONTRACTOR MODELS - SEE SPECIAL PARTS SECTION FOLLOWING STANDARD PARTS SECTION					1

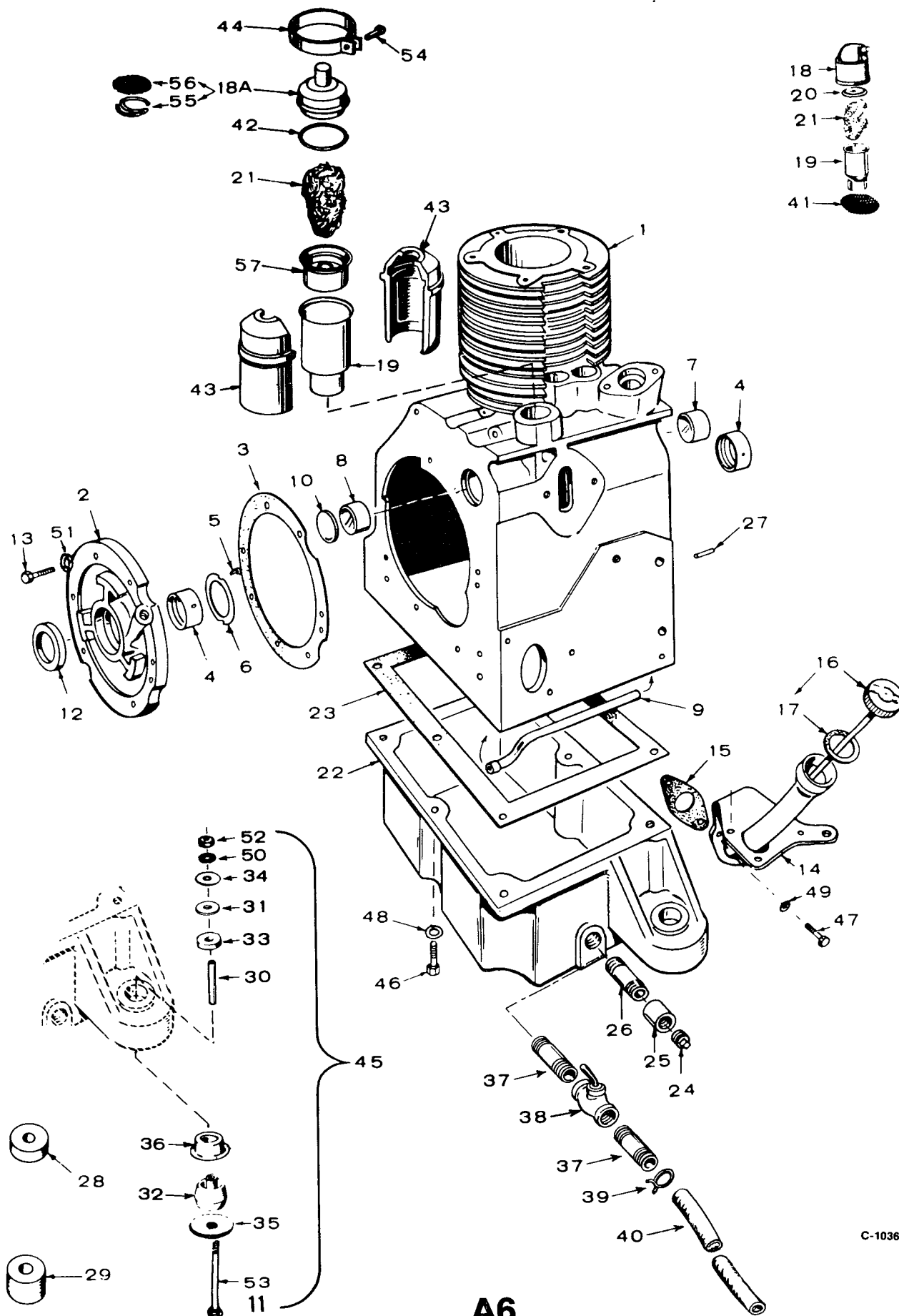
* - The diagonal line (/) in the model and specification number separates generator set characteristics from the specification number and letter. The specification number denotes customer requested options or deviations from a standard (1A, 1B, etc.) model. The specification letter advances (A to B, B to C, etc.) with major manufacturing changes.

** - Set is reconnectable for 120 volt, 2 wire; 240 volt; 2 wire or 120/240 volt, 3 wire service.

STANDARD PARTS SECTION

This section contains standard parts applicable to models listed in the generator set data table.

CYLINDER BLOCK AND OIL BASE



C-1036

CYLINDER BLOCK AND OIL BASE

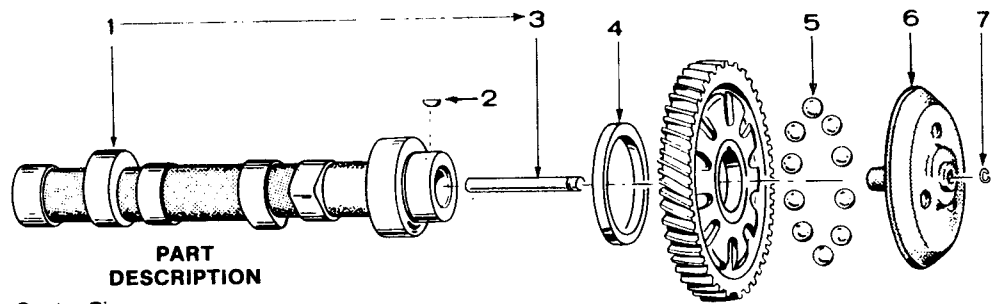
REF. NO.	PART NO.	QTY. USED	PART DESCRIPTION	REF. NO.	PART NO.	QTY. USED	PART DESCRIPTION
1	110-1335	1	Block Assembly, Cylinder (Includes Parts Marked * Plus Tappets)	31	526-0198	8	#†Washer (5/8" ID x 1-1/2" OD x 1/16" Thk) Only With Cone Shaped Cushion (Use as Required)
2	101-0337	1	*Plate, Bearing (Less Bearing & Pins)	32	CUSHION, VIBRATION - CONE SHAPED - BEGIN SPEC C		
3	101-0386	1	*Gasket and Shim Kit, Rear Bearing Plate - Includes Bearing Plate Mounting Washers	402-0284		2	Engine End
4	BEARING, PRECISION			402-0285		2	Generator End
	101-0359	2	*Standard	33	402-0282	4	£#†Snubber, Shock Mounting - Begin Spec C
	101-0359-02	2	.002" Undersize	34	526-0014	4	£#†Washer (29/64" ID x 1-1/2" OD x 1/8" Thk) Only with Cone Shaped Cushion
	101-0359-10	2	.010" Undersize	35	526-0195	4	£#†Washer (29/64" ID x 3" OD x 1/8" Thk) Only with Cone Shaped Cushion
	101-0359-20	2	.020" Undersize	36	402-0300	4	#†Cup, Cushion Retaining
	101-0359-30	2	.030" Undersize	37	NIPPLE, PIPE - Oil Drain		
5	516-0072	4	*Screw, Drive	505-0002		2	Long (1/2" x 3") Housed Sets
6	104-0420	2	*Washer, Crankshaft Thrust	505-0002		1	Long (1/2" x 3") Skid Mounted Sets
7	101-0363	1	*Bearing, Precision Cam - Front	505-0185		1	Half (1/2" x 1-1/2") Skid Mounted Sets
8	101-0365	1	*Bearing, Precision Cam - Rear	38	504-0011	1	Valve, Oil Drain - Housed and Skid Mounted Sets
9	120-0572	1	*Tube, Crankcase Oil	39	503-0197	1	Clamp, Oil Drain - Housed and Skid Mounted Sets
10	517-0053	1	*Plug, Camshaft Opening	40	503-0316	1	Hose, Oil Drain - Housed and Skid Mounted Sets
11	104-0170	4	#Screw, Cap - Hex Head (Special) Housed Sets	41	123-0958	1	Screen, Breather Tube - Early Spec R Models
12	509-0086	1	Seal, Crankshaft Rear	42	509-0117	1	Seal, "O" Ring - Breather Tube - Begin Spec R
13	805-0019	6	*Bolt, Place (Special)	43	123-0998	2	Insulator Halves - Breather Tube - Begin Spec R
14	TUBE, OIL FILL			44	518-0268	1	Clamp, Breather Tube Insulator Halves - Begin Spec R
	123-0724	1	Spec A through R	45	HARDWARE PACKAGE, MOUNTING		
	123-1084	1	Begin Spec S	402-0301		4	Sets Without Housing or Skid Mounting (Includes Parts Marked †)
15	123-0667	1	Gasket, Oil Fill Tube	402-0341		1	Housed Sets (Includes Parts Marked #)
16	123-0716	1	Cap & Indicator	402-0327		1	Skid Mounted Sets (Includes Parts Marked £)
17	123-0191	1	Gasket, Cap		SCREW, CAP - HEX HEAD		
18	CAP, BREATHER			46	800-0050	6	Oil Base Mounting (3/8-16 x 1")
	123-0458	1	Spec A	47	800-0026	2	Oil Fill Tube Mounting (5/16-18 x 3/4")
	123-0787	1	Spec B through P		WASHER, LOCK - SPRING		
18A	123-1203	1	Cap & Valve Assembly, Breather - Begin Spec R	48	850-0050	6	Oil Base Mounting (3/8")
19	*TUBE, BREATHER			49	850-0045	2	Oil Fill Tube Mounting (5/16")
	123-0645	1	Spec A through Q	50	850-0055	4	£#†Generator Set Mounting (7/16")
	123-0952	1	Begin Spec R	51	526-0245	6	*Washer, Flat (Special)
20	123-0315	1	Valve, Breather - Spec A through Q	52	862-0004	4	£#†Nut, Hex (7/16-14)
21	123-1283	1	Filter, Breather	53	SCREW, MOUNTING		
22	BASE, OIL			816-0212		4	†Bolt, Carriage (7/16-14 x 5-1/2") Housed Sets
	102-0488	1	Spec A and B	800-0082		4	£Screw, Cap (7/16-14 x 3-3/4") Skid Mounted Sets
	102-0541	1	Begin Spec C	54	809-0035	1	Screw, Machine - Round Head Sheet Metal (#8 x 3/4")
	102-0547	1	Sets Without Oil Base Heater	55	123-1201	1	Retainer, Breather Screen - Begin Spec R
23	102-0459	1	Gasket, Base	56	123-1202	1	Screen, Breather - Begin Spec R
24	505-0056	1	Plug, Pipe - Square Head (1/2") Sets Without Housing or Skid Mounting	57	123-1153	1	Cup, Baffle - Begin Spec R
25	505-0014	1	Coupling, Pipe (1/2") Sets Without Housing or Skid Mounting				
26	505-0002	1	Nipple, Pipe (1/2" x 3") Sets Without Housing or Skid Mounting				
27	516-0141	2	*Pin, Dowel - Gearcase Locating				
28	402-0036	4	Mount, Vibration - Cylindrical Shaped - Upper - Spec A and B				
29	402-0038	4	Mount, Vibration - Cylindrical Shaped - Lower - Spec A and B				
30	BUSHING, SPACER - VIBRATION MOUNT						
	402-0046	4	Spec A and B				
			Begin Spec C				
	402-0328	4	#† Sets Without Skid Mounting				
	402-0290	4	£ Sets With Skid Mounting				

A7

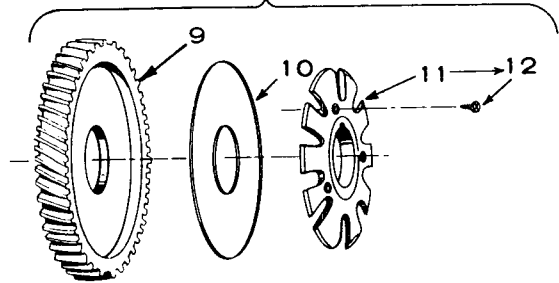
* - Parts Included in 110-1335 Cylinder Block Assembly.
† - Parts Included in 402-0301 Mounting Hardware Package.
- Parts Included in 402-0341 Mounting Hardware Package.
£ - Parts Included in 402-0327 Mounting Hardware Package.

* - Parts Included in 110-1335 Cylinder Block Assembly.
† - Parts Included in 402-0301 Mounting Hardware Package.
- Parts Included in 402-0341 Mounting Hardware Package.
£ - Parts Included in 402-0327 Mounting Hardware Package.

CAMSHAFT



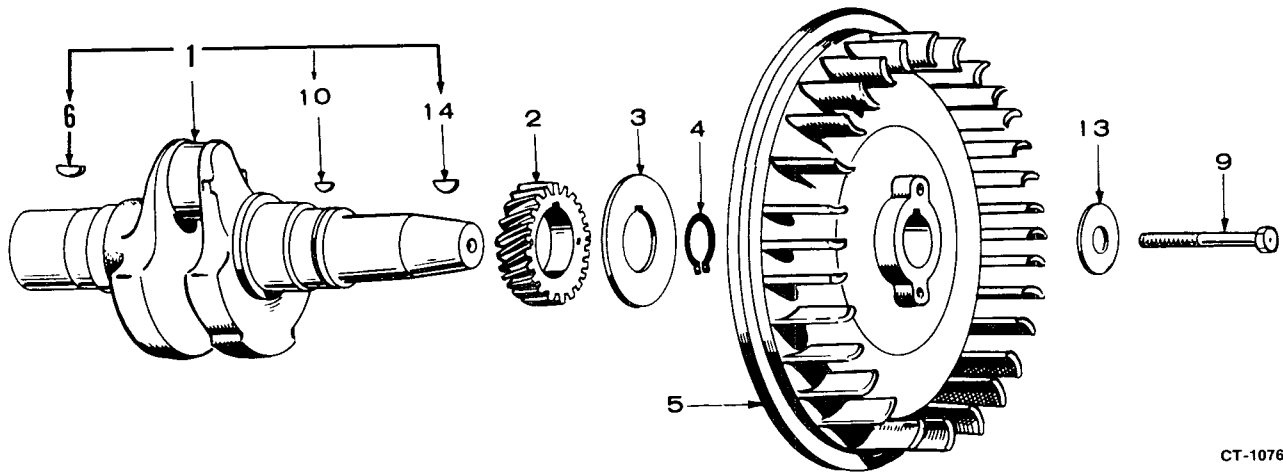
REF. NO.	PART NO.	QTY. USED	PART DESCRIPTION
1	CAMSHAFT - Includes		Center Pin
	105-0248	1	Spec A through Q
	105-0299	1	Begin Spec R
2	515-0001	1	Key, Camshaft Gear
3	150-0075	1	Pin, Center
4	105-0205	1	Washer, Thrust
5	510-0046	10	Flyball, Governor
6	150-0775	1	Cup, Governor
7	150-0078	1	Ring, Retainer
8	105-0218	1	Gear Assembly, Camshaft (Includes Parts Marked *)
9	105-0465	1	*#Gear, Camshaft
10	150-0773	1	*#Plate, Governor Flyball
11	150-1842	1	*#Spacer Kit, Governor Flyball (Includes Mounting Screws)
12	815-0506	3	*. Screw, Spacer Mounting (Special)



C-1095

* - Parts Included in 105-0218 Camshaft Gear Assembly.
- Camshaft Gear Assemblies With Rivets Order 105-0218
Camshaft Gear Assembly.

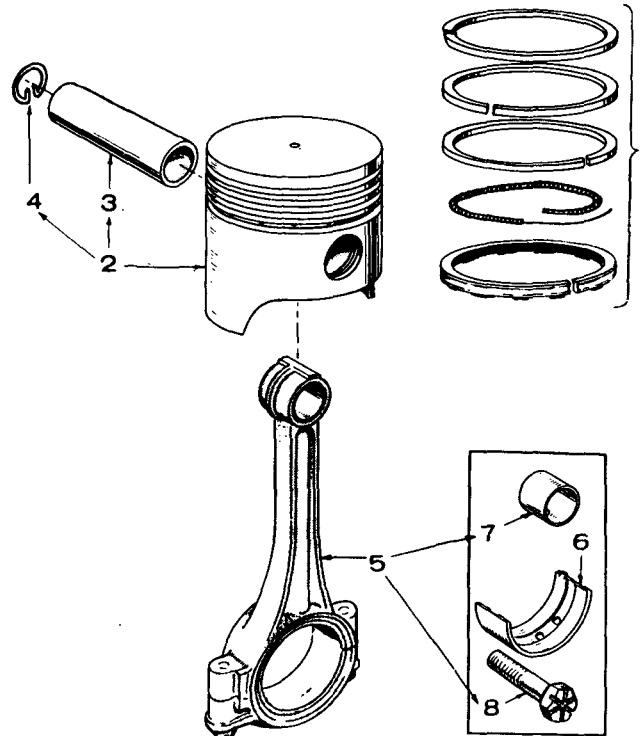
CRANKSHAFT AND FLYWHEEL



CT-1076

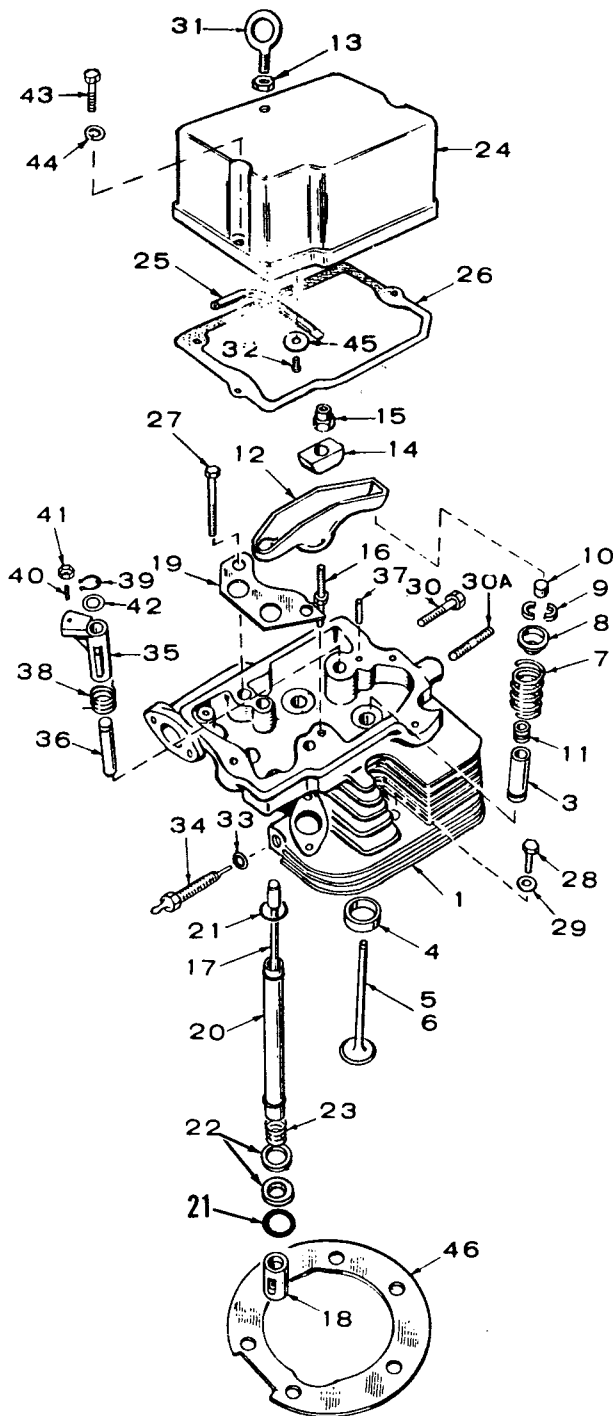
REF. NO.	PART NO.	QTY. USED	PART DESCRIPTION
1	104-1288	1	Crankshaft Kit (Includes All Keys)
2	104-0418	1	Gear
3	104-0416	1	Washer, Retainer
4	518-0188	1	Ring, Lock
5	104-0529	1	Flywheel
6	515-0006	1	Key, Blower to Crankshaft
9	800-0500	1	Screw, Flywheel (Special)
10	515-0001	1	Key, Gear
13	526-0185	1	Washer, Flywheel (7/16")
14	515-0153	1	Key, Flywheel to Crankshaft

PISTON AND ROD



REF. NO.	PART NO.	QTY. USED	PART DESCRIPTION
1	RING SET, PISTON		
	113-0130	1	Standard
	113-0130-05	1	.005" Oversize
	113-0130-10	1	.010" Oversize
	113-0130-20	1	.020" Oversize
	113-0130-30	1	.030" Oversize
	113-0130-40	1	.040" Oversize
2	PISTON & PIN, INCLUDES PIN RETAINING RINGS		
			Spec A through Q
	112-0173	1	Standard
	112-0173-05	1	.005" Oversize
	112-0173-10	1	.010" Oversize
	112-0173-20	1	.020" Oversize
	112-0173-30	1	.030" Oversize
	112-0173-40	1	.040" Oversize
			Begin Spec R
	112-0109	1	Standard
	112-0109-05	1	.005" Oversize
	112-0109-10	1	.010" Oversize
	112-0109-20	1	.020" Oversize
	112-0109-30	1	.030" Oversize
	112-0109-40	1	.040" Oversize
3	112-0093	1	Pin, Piston
4	112-0085	2	Ring, Retaining - Pin
5	114-0168	1	Rod Assembly, Connecting
6	BEARING HALF, CONNECTING ROD		
	114-0164	2	Standard
	114-0164-10	2	.010" Undersize
	114-0164-20	2	.020" Undersize
	114-0164-30	2	.030" Undersize
7	114-0170	2	Bushing Half, Piston Pin - Connecting Rod
8	805-0012	2	Bolt, Place - (Special)

CYLINDER HEAD



REF. NO.	PART NO.	QTY. USED	PART DESCRIPTION
1	HEAD, CYLINDER 110-2963	1	With Valves (Includes Oil Line Connector and Parts Marked +)
	110-3059	1	+Without Valves (Includes Parts Marked #)
3*	GUIDE, VALVE		Early Style
	110-1501	2	Standard
	110-1501-01	2	.001" Oversize
	110-1501-05	2	.005" Oversize
			Late Style
	110-1869	1	#+ Intake
	110-1870	1	#+ Exhaust
4	INSERT, VALVE SEAT		
	110-1268	2	#+Standard
	110-1268-02	2	.002" Oversize
	110-1268-05	2	.005" Oversize
	110-1268-10	2	.010" Oversize
	110-1268-25	2	.025" Oversize
5	*VALVE, INTAKE		
	110-1320	1	Early Style
	110-1871	1	+Late Style
6	110-1278	1	+Valve, Exhaust
7	110-1221	2	+Spring, Valve
8	110-1220	2	+Retainer, Valve Spring
9	110-0858	4	+Lock, Valve Spring Retainer
10	110-0859	2	Cap, Valve Stem
11	*SEAL, OIL - Intake Valve		
	509-0090	1	Early Style
	509-0132	1	+Late Style
12	ARM, ROCKER		
	115-0128	1	Exhaust
	115-0129	1	Intake
13	862-0003	1	Nut, Hex (3/8-16)
14	115-0127	2	Ball, Rocker Arm
15	115-0150	2	Lock Nut, Rocker Arm
16	115-0152	2	+Stud, Rocker Arm
17	115-0149	2	Rod, Valve Push (Steel)
18	TAPPET, VALVE		
	115-0132	2	Spec A through Q
	115-0195	2	Begin Spec R
19	115-0147	1	Guide, Push Rod
20	115-0151	2	Shield, Push Rod
21	509-0084	4	Seal, Push Rod Shield
22	115-0155	4	Washer, Spring Retaining
23	115-0146	2	Spring, Shield Retainer
24	115-0188	1	Cover Assembly, Rocker (Includes Parts Marked *)
25	120-0595	1	*Line, Oil - Rocker Cover
26	115-0160	1	Gasket, Rocker Cover
27	110-1264	2	Screw, Cylinder Head (3/8-16 x 4-1/4")
28	110-0814	4	Screw, Cylinder Head (3/8-16 x 1-1/2")
29	526-0174	4	Washer, Cylinder Head
30	800-0031	2	Screw (5/16-18 x 1-1/2") - Exhaust Manifold - Spec A through Q
30A	520-0608	2	Stud, Exhaust Manifold Mounting - Begin Spec R
31	403-0671	1	Bolt, Lifting
32	815-0562	1	*Screw, Machine - Cross Recessed Pan Head (#10 x 5/16")
33	110-0546	1	Gasket, Glow Plug
34	PLUG, GLOW (Includes Gasket)		
	333-0106	1	Key 1 - 12 Volt
	333-0107	1	Key 3 - 24 Volt
	333-0112	1	Key 2, 4 - 32 Volt
35	110-1512	1	Arm, Decompression Release
36	110-1444	1	+Pin, Decompression Release
37	PIN, ROLL		
	516-0090	1	3/16" x 1-3/8"
	516-0192	1	#+3/16" x 1-5/8"
38	110-1356	1	Spring, Decompression Release

M-1521

CYLINDER HEAD

REF. NO.	PART NO.	QTY. USED	PART DESCRIPTION
39	518-0207	1	Ring, Retainer - Decompression Release
40	815-0252	1	Screw, Set - Decompression Release
41	870-0134	1	Palnut, Decompression Release
42	110-1511	1	Washer, Decompression Release (Not used on early models with cast iron arm)
43	110-0879	2	Screw, Hex Cap - Rocker Cover Mounting (5/16-18 x 1-1/4")
44	850-0045	2	Washer, Lock - Spring Rocker Cover Mounting (5/16")
45	526-0130	1	*Washer, Flat (17/64" ID x 1" OD x 1/16" Thk)
46	110-1267	1	Gasket, Head

- Parts Included in 110-3059 Cylinder Head.

+ - Parts Included in 110-2963 Cylinder Head Assembly.

* - Parts Included in 115-0188 Rocker Cover Assembly.

★ - **NOTE:** Due to manufacturing changes, replacement parts for the intake valve, valve guide and valve stem oil seal must be used in the proper combination:

The 509-0090 oil seal must be used with the 110-1320 intake valve and the 110-1501 valve guide.

The 509-0132 oil seal must be used with the 110-1871 intake valve and the 110-1869 valve guide.

For identification, Figure 1 illustrates the top view of the valves and Figure 2 illustrates a cross section of the valve stem oil seals.

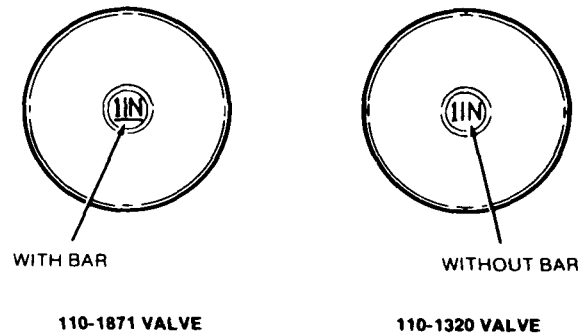


FIGURE 1. VALVE IDENTIFICATION

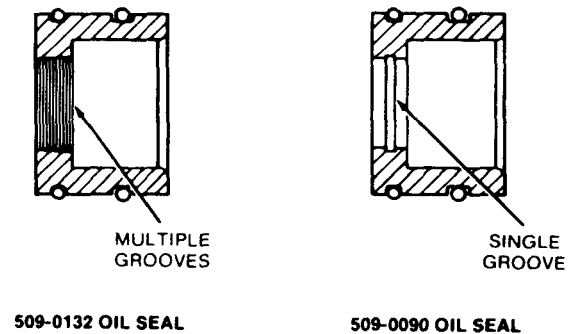
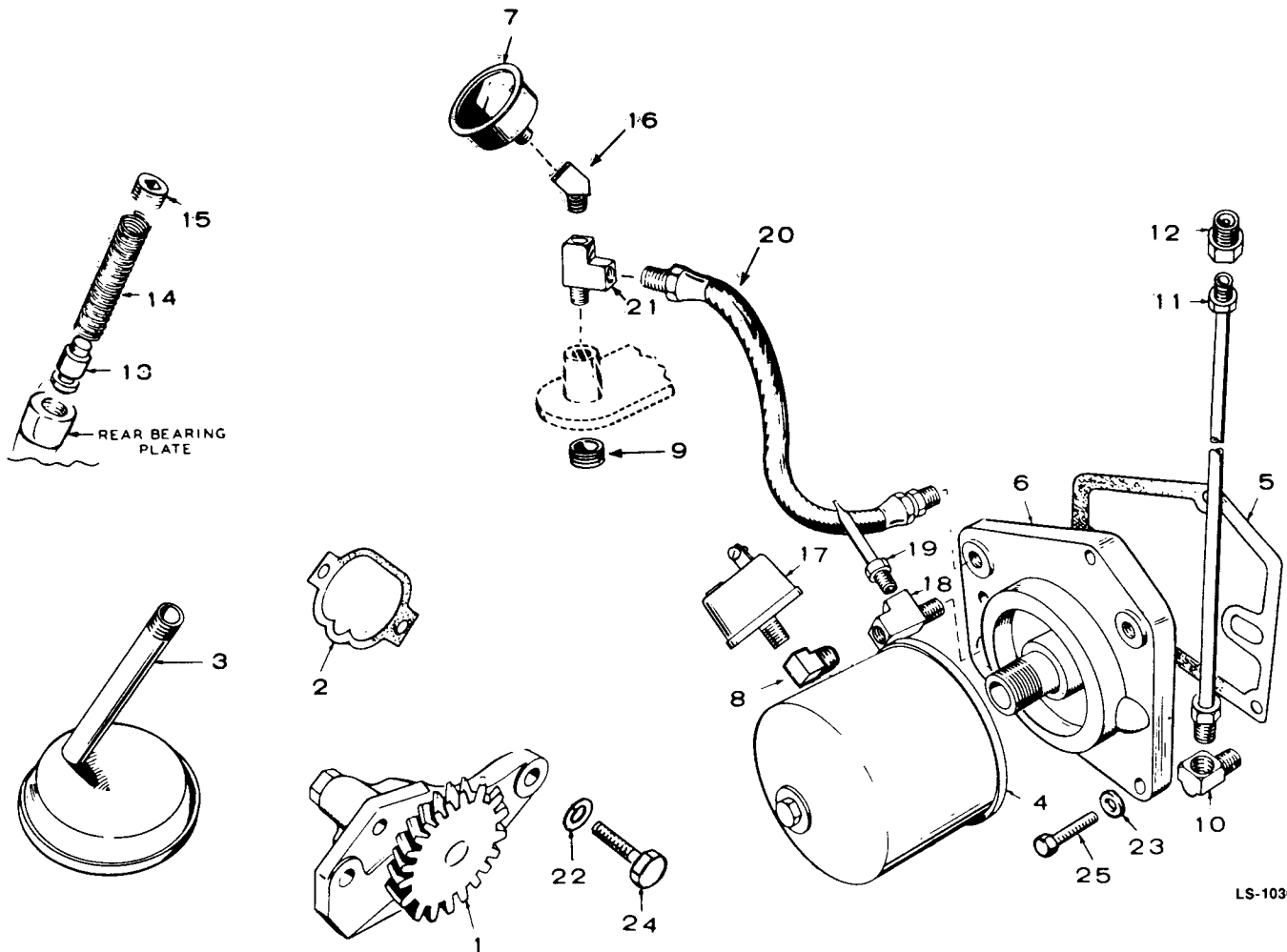


FIGURE 2. OIL SEAL IDENTIFICATION

OIL SYSTEM



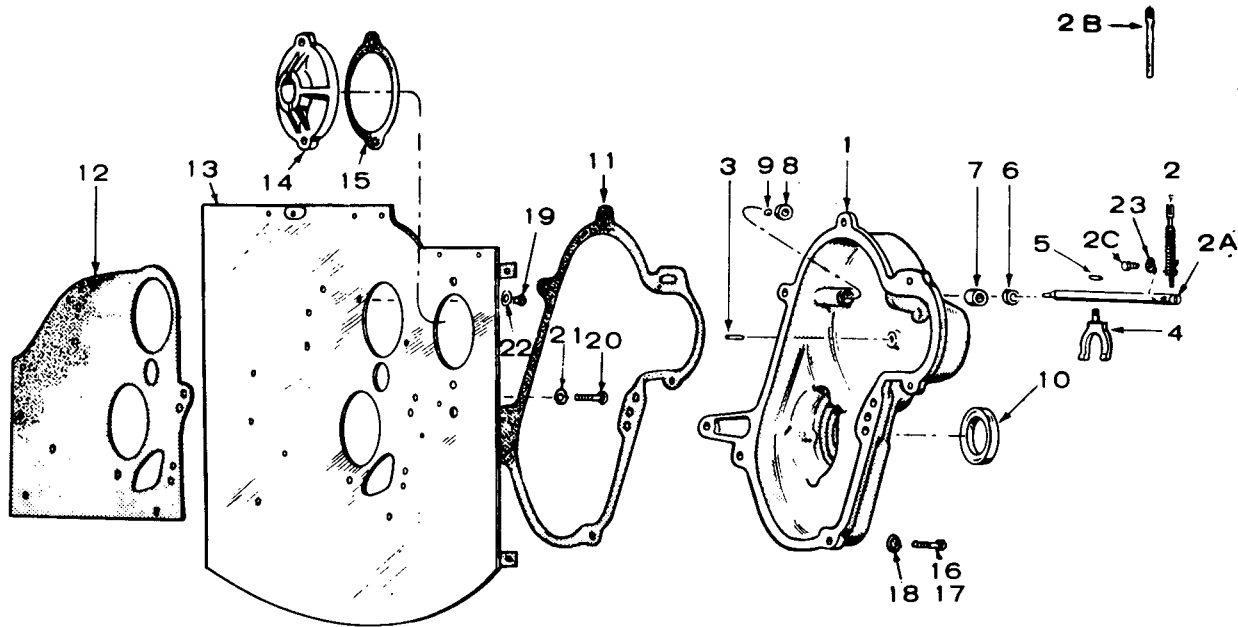
LS-1030

REF. NO.	PART NO.	QTY. USED	PART DESCRIPTION
1	120-0547	1	Pump, Oil
2	120-0580	1	Gasket Kit, Pump
3	120-0551	1	Cup, Oil Pump Intake
4	122-0185	1	Filter, Oil - 4-3/8" Long
5	122-0188	1	Gasket, Adapter
6	122-0182	1	Adapter, Oil Filter
7	193-0006	1	Gauge, Oil Pressure
8	502-0020	1	Elbow, Street - 90°
9	505-0274	1	Plug, Hex - Countersunk (1/8")
10	ELBOW, OIL LINE TO FILTER ADAPTER		
	502-0019	1	Spec A through Q
	502-0037	1	Begin Spec R
11	LINE, ADAPTER TO CYLINDER HEAD		
	120-0562	1	Spec A through Q
	120-0622	1	Begin Spec R
12	CONNECTOR, RESTRICTED CYLINDER HEAD		
	502-0235	1	Spec A through Q
	502-0281	1	*Begin Spec R
13	120-0539	1	Valve, Oil By-Pass
14	120-0555	1	Spring, By-Pass Valve

REF. NO.	PART NO.	QTY. USED	PART DESCRIPTION
15	505-0274	1	Plug, Hex - Countersunk (1/8")
16	502-0053	1	Elbow, Oil Gauge Mounting (45°) Begin Spec S
17	309-0104	1	Switch, Low Oil Pressure
18	502-0255	1	Tee, Restricted - Air Trap Tube
19	120-0598	1	Tube, Air Trap - Switch
20	501-0003	1	Line, Oil Gauge - Begin Spec S
21	502-0001	1	Tee, Oil Gauge Mounting - Begin Spec S
	WASHER, LOCK - SPRING (5/16")		
22	850-0045	2	Oil Pump Mounting
23	850-1045	3	Oil Filter Adapter Mounting
	SCREW, CAP - HEX HEAD		
24	800-0028	2	Oil Pump Mounting (5/16-18 x 1")
25	800-0026	3	Oil Filter Adapter Mounting (5/16-18 x 3/4")

* - Part Included in 110-2963 Cylinder Head Assembly.

GEARCASE

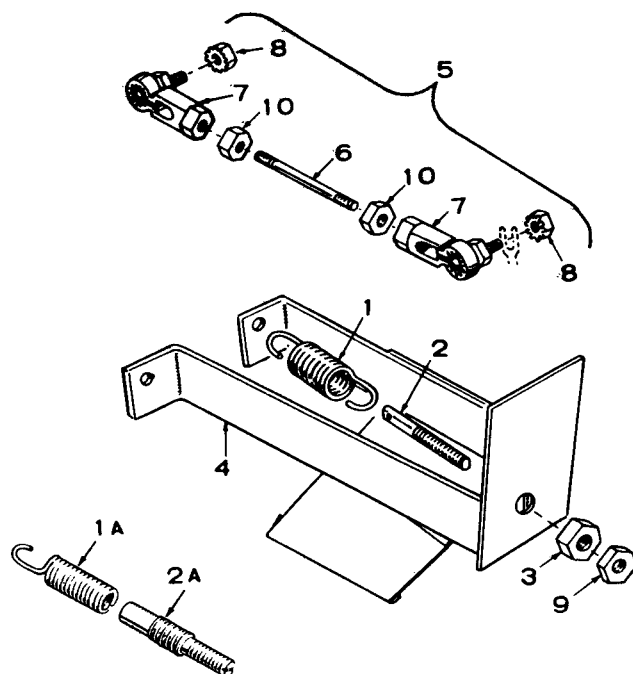


REF. NO.	PART NO.	QTY. USED	PART DESCRIPTION
1	103-0277	1	Gearcase Assembly - Complete (Includes Parts Marked *)
2	150-1089	1	Arm, Governor - Begin Spec R
2A	150-0838	1	*Shaft, Governor
2B	150-0856	1	Arm, Governor - Spec A through Q
2C	815-0176	1	*Screw (#8-32 x 1/2")
3	516-0111	1	*Pin, Roll - Governor Cup Stop
4	150-0777	1	*Yoke, Governor
5	518-0129	1	*Ring, Yoke
6	509-0088	1	*Seal, Oil
7	510-0048	1	*Bearing (1/2") - Governor Shaft
8	510-0082	1	*Bearing (1/4") - Governor Shaft
9	510-0043	1	*Ball, Bearing - Governor Shaft Thrust
10	509-0087	1	*Seal, Oil
11	103-0251	1	Gasket, Gearcase
12	103-0218	1	Gasket, Backplate
13	103-0226	1	Backplate
14	103-0221	1	Cover, Gearcase Backplate Opening
15	160-0721	1	Gasket, Backplate Opening Cover

REF. NO.	PART NO.	QTY. USED	PART DESCRIPTION
			SCREW, CAP - HEX HEAD - Gearcase Mtg.
16	800-0028	1	5/16-18 x 1"
17	110-0879	4	5/16-18 x 1-1/4"
18	850-0045	5	Washer, Lock - Spring Gearcase Mounting (5/16")
19	815-0347	2	Screw, Hex Head - Gearcase Backplate Mounting 1/4-20 x 1/2")
20	800-0026	1	Screw, Cap - Hex Head Gearcase Backplate Mounting (5/16-18 x 3/4")
21	850-0045	1	Washer, Lock - Spring - Gearcase Backplate Backplate Mounting (5/16")
22	526-0115	2	Washer, Flat - Gearcase Backplate Mounting
23	850-0025	1	*Washer, Lock - Spring (#8)

* - Included in 103-0277 Gearcase Assembly

GOVERNOR

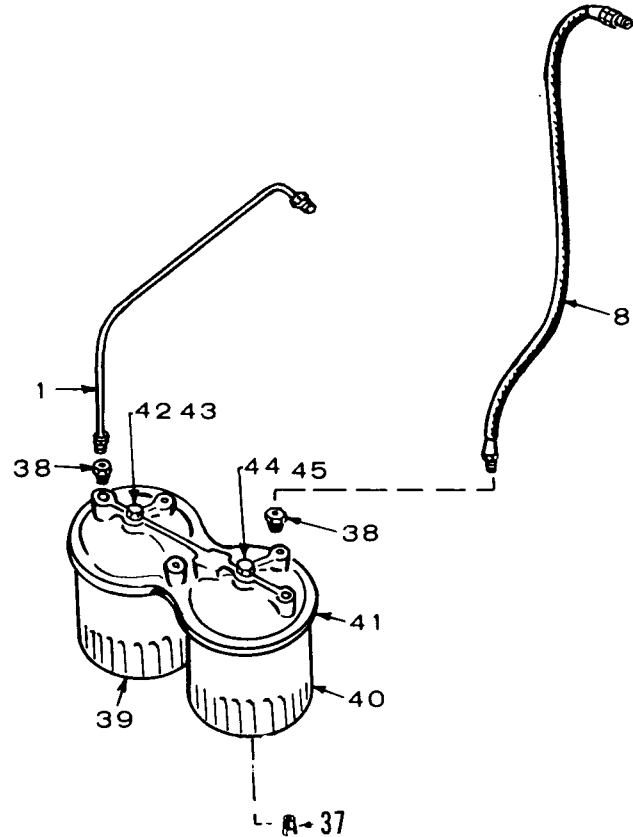
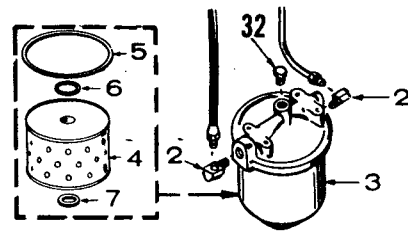
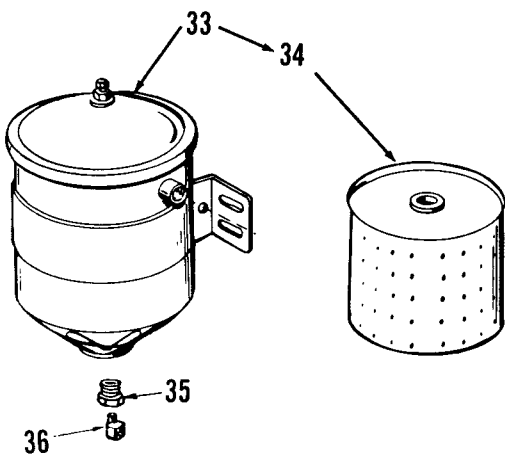
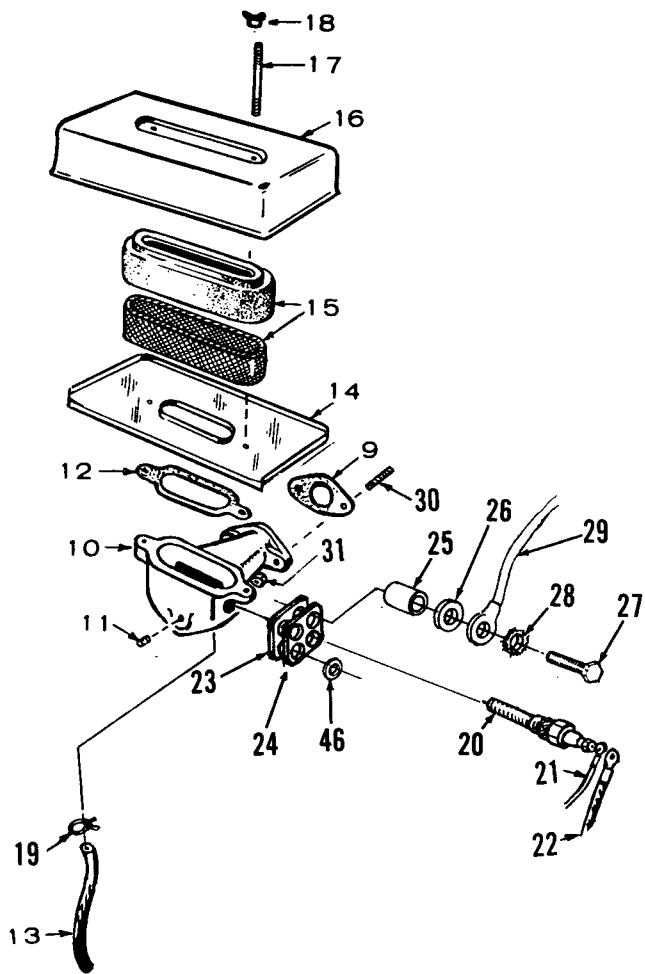


FS 1040

REF. NO.	PART NO.	QTY. USED	PART DESCRIPTION
1	150-1084	1	Spring, Governor - Begin Spec R
1A	150-0821	1	Spring, Governor - Spec A through Q
2	150-1082	1	Stud, Adjusting - Begin Spec R
2A	150-0822	1	Stud, Adjusting - Spec A through Q
3	NUT, ADJUSTING STUD		
	104-0091	1	Spec A through Q
	862-0003	1	Begin Spec R
4	BRACKET ASSEMBLY		
	150-0812	1	Spec A through Q
	150-1107	1	Begin Spec R
5	150-1202	1	Linkage Assembly, Governor - Begin Spec R (Includes Parts Marked *)
6	LINK		
	150-0883	1	Spec A through Q
	150-1201	1	*Begin Spec R
7	JOINT, BALL		
	150-0974	2	Spec A through Q
	150-0939	2	*Begin Spec R
8	870-0131	2	*Nut, Hex - With ET
9	NUT, LOCK		
	870-0130	1	Spec A through Q
	870-0133	1	Begin Spec R
10	870-0053	2	*Nut, Hex - Begin Spec R

* - Parts Included in 150-1202 Governor Linkage Assembly.

AIR CLEANER AND FUEL FILTER

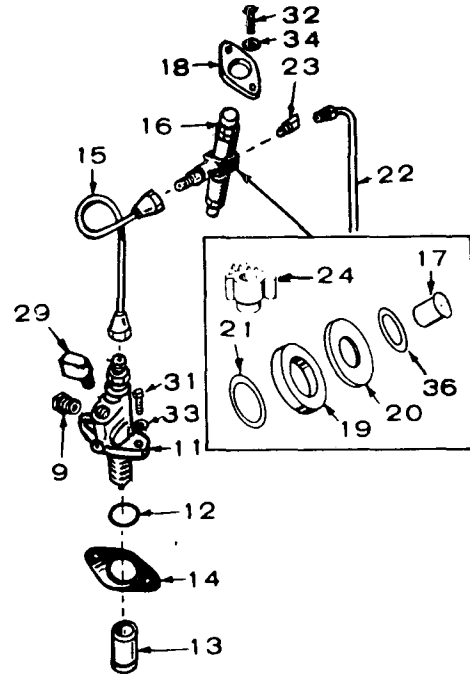
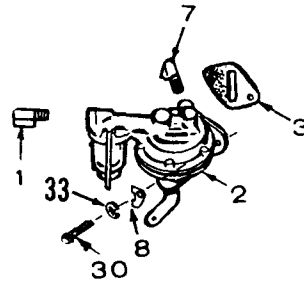
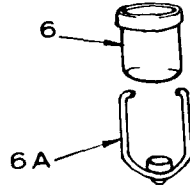
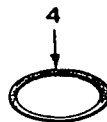
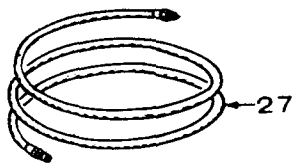


AIR CLEANER AND FUEL FILTER

REF. NO.	PART NO.	QTY. USED	PART DESCRIPTION	REF. NO.	PART NO.	QTY. USED	PART DESCRIPTION
1	LINE, FUEL - Transfer Pump to Primary Filter			28	853-0013	1	#Washer, Lock - ET (1/4") Key 3
	501-0032	1	Spec A through R	29	LEAD, JUMPER		
	149-1191	1	Begin Spec S		334-0031	1	Key 2,4 (Heater to Heater)
2	ELBOW, SECONDARY FILTER TO LINE - Spec A through R				336-1408	1	Key 3 (Screw to Heater)
	502-0041	1	Inlet	30	520-0011	2	Stud, Adapter Mounting
	502-0054	1	Outlet	31	870-0137	2	Nut, Huglock - Adapter Mounting
3	149-0408	1	Filter, Secondary (Includes Cartridge) - Spec A through R	32	149-0769	1	Plug, Air Bleed - Spec A through R
4	149-0428	1	Cartridge, Secondary Fuel Filter - Spec A through R	33	149-1078	1	Filter, Fuel - Fuel Tank to Transfer Pump - Spec A through R (Includes Cartridge)
5	149-0456	1	Gasket, Secondary Filter - Bowl to Cover - Spec A through R	34	149-0846	1	Cartridge, Fuel Filter - Spec A through R
6	149-0455	1	Gasket, Secondary Filter - Cartridge to Head - Spec A through R	35	505-0007	2	Bushing, Filter - Spec A through R
7	149-0493	1	Gasket, Secondary Filter - Cartridge to Retainer - Spec A through R	36	502-0020	1	Elbow, Street - Filter Outlet - Spec A through R
8	501-0103	1	Line, Fuel - Secondary Filter to Injection Pump	37	502-0080	2	Plug, Fuel Filter Drain - Begin Spec S
9	141-0281	1	*#Gasket, Air Cleaner Adapter to Engine	38	502-0003	2	Connector - Primary Filter Inlet (1) and Secondary Filter Outlet (1) - Begin Spec S
10	ADAPTER KIT, AIR CLEANER			39	122-0325	1	Filter, Fuel - Primary - Begin Spec S
	140-1748	1	Key 1	40	122-0326	1	Filter, Fuel - Secondary - Begin Spec S
	140-1910	1	Key 2,4 (Includes Parts Marked *)	41	149-1185	1	Adapter, Fuel Filter - Begin Spec S
	140-1909	1	Key 3 (Includes Parts Marked #)	42	526-0068	1	Washer, Flat (29/64" ID x 3/4" OD x 1/16" Thk) Primary Fuel Filter Mounting - Begin Spec S
11	505-0180	1	Plug, Pipe (1/4")	43	801-0074	1	Screw, Cap - Hex Head (7/16-20 x 1-3/4") Primary Fuel Filter Mounting - Begin Spec S
12	140-0584	1	Gasket, Air Cleaner	44	526-0066	1	Washer, Flat (25/64" ID x 9/16" OD x 1/16" Thk) Secondary Fuel Filter Mounting - Begin Spec S
13	HOSE, BREATHER			45	801-0053	1	Screw, Cap - Hex Head (3/8-24 x 1-3/4") Secondary Fuel Filter Mounting - Begin Spec S
	123-0769	1	Spec A	46	WASHER, FLAT (9/32" ID x 9/16" OD x 1/16" Thk)		
	503-0479	1	Spec B through P		526-0015	2	*Key 2,4
	503-0560	1	Begin Spec R		526-0015	1	#Key 3
14	140-0595	1	Pan, Air Cleaner				
15	140-0636	1	Element and Retainer - Air Cleaner				
16	140-0594	1	Cover, Air Cleaner				
17	520-0621	2	Stud, Air Cleaner				
18	865-0020	2	Nut, Wing - Air Cleaner				
19	503-0171	2	Clamp, Breather Hose				
20	HEATER, MANIFOLD - Includes Gasket						
	154-0712	1	Key 1				
	154-0712	3	Key 2,4				
	154-0712	2	Key 3				
21	LEAD, GLOW PLUG TO AIR HEATER						
	336-1380	1	Round Type Terminal				
	336-1505	1	Blade Type Terminal				
22	336-1418	1	Lead, Air Heater to Solenoid in Control				
23	140-1704	1	*#Gasket, Heater Plate - Key 2,3,4				
24	140-1703	1	*#Plate, Heater - Key 2,3,4				
25	508-0103	2	*#Bushing, Insulator - Key 2,3,4				
26	508-0102	2	*#Washer, Insulator - Key 2,3,4				
27	114-0023	2	Screw, Cap - Hex Head (Special) - Key 2,3,4				

* - Parts Included in 140-1910 Air Cleaner Adapter Kit
- Parts Included in 140-1909 Air Cleaner Adapter Kit

INJECTION SYSTEM

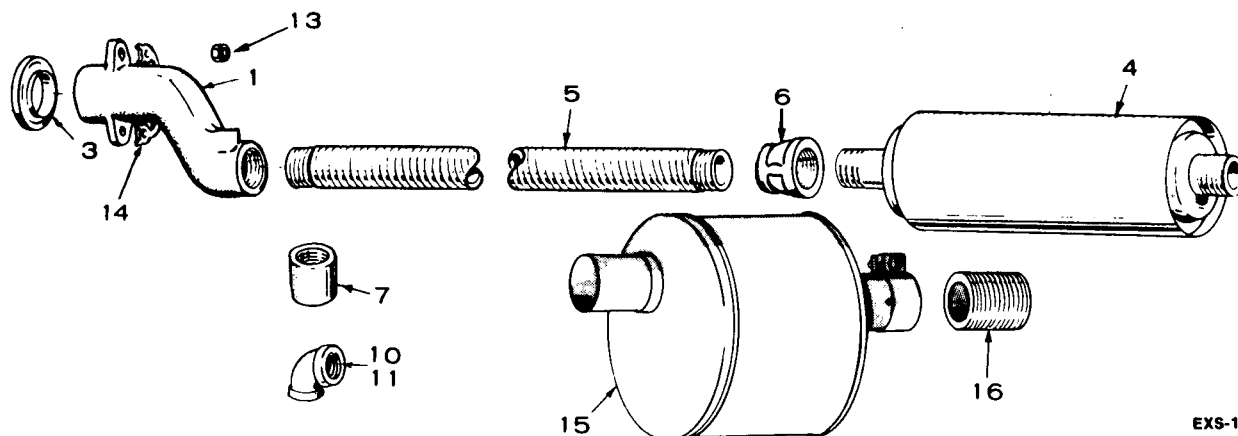


FS-1528

REF. NO.	PART NO.	QTY. USED	PART DESCRIPTION
	149-1047	1	Repair Kit, Fuel Pump (Includes Diaphragm & Gaskets)
1	502-0002	1	Elbow, Inverted Male - Fuel Pump Inlet
2	149-1789	1	Pump Kit, Fuel Transfer - Includes Mounting Gasket
3	149-0792	1	Gasket, Fuel Pump Mounting
4	149-0517	1	Gasket, Fuel Pump Bowl
5	149-0463	1	Screen, Fuel Transfer Pump
6	BOWL, FUEL PUMP FILTER (Measure for Length)		
	149-0116	1	2-3/8" Long
	149-1168	1	1-5/8" Long
6A	BAIL, FUEL PUMP FILTER (Measure for Length)		
	149-1006	1	3-5/8" Long
	149-1169	1	2-7/8" Long
7	502-0065	1	Elbow, 45° Inverted - Begin Spec S
8	149-1307	2	Washer, Fuel Pump Mounting
9	502-0033	1	Connector, Inverted - Injection Pump Inlet - Begin Spec B
10	502-0041	1	Elbow, Injection Pump Inlet - Spec A
11	PUMP, INJECTION	1	Spec A — For Replacement Order 147-0180 Pump, 502-0033 Connector, 149-0947 Line and E154 Instruction Sheet
	147-0180	1	Begin Spec B
12	509-0101	1	Seal, O-Ring, Injection Pump to Crankcase
13	115-0166	1	Tappet, Injection Pump
14	147-0172	1	Shim Kit, Injection Pump

REF. NO.	PART NO.	QTY. USED	PART DESCRIPTION
15	149-0925	1	Line, Injection Pump to Nozzle
16	147-0136	1	Nozzle & Holder Assembly
17	147-0134	1	Nozzle Only (Component of Nozzle & Holder Assembly)
18	147-0141	1	Flange, Injection Nozzle Hold-down
19	147-0044	1	Shield, Nozzle Heat
20	147-0043	1	Gasket, Heat Shield
21	110-0419	1	Gasket, Shield to Head
22	LINE, NOZZLE FUEL RETURN		
	149-0958	1	Spec A Only
	149-0947	1	Begin Spec B
23	502-0065	1	Elbow, Inverted - 45° - Nozzle (Fuel Return Line)
24	147-0133	1	Adapter, Injection Nozzle
27	501-0007	2	Line, Fuel (24")
29	147-0183	1	Valve, Check - Injection Pump - Begin Spec B
	SCREW, CAP - HEX HEAD		
30	800-0027	2	Fuel Pump Mounting (5/16-18 x 7/8")
31	800-0194	2	Injection Pump Mounting (5/16-18 x 1-3/8")
32	800-0508	2	Nozzle Mounting (5/16-18 x 2-3/4")
33	850-0045	4	Washer, Lock - Spring (5/16") - Injection Pump (2) and Fuel Transfer Pump (2) Mounting
34	526-0122	2	Washer, Flat - Nozzle Mounting (11/32" ID x 23/32" OD x .06" Thk)
35	502-0003	1	Connector, Inverted Male - Fuel Pump Outlet - Spec A through R
36	147-0243	1	Gasket, Nozzle Tip

EXHAUST SYSTEM

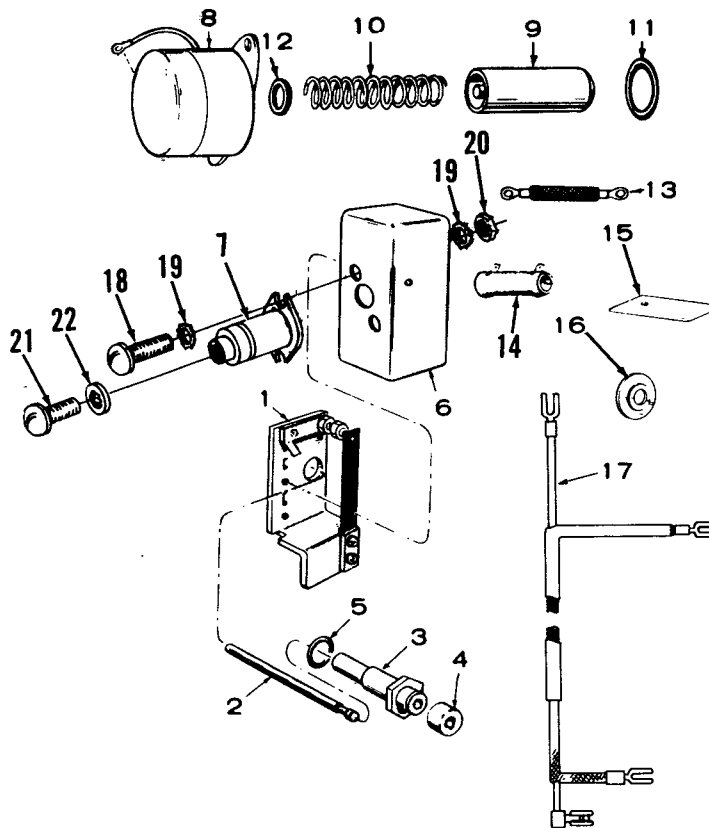


EXS-1022

REF. NO.	PART NO.	QTY. USED	PART DESCRIPTION
	155-1898	1	Exhaust Package, Critical Muffler (Includes 155-0360 Muffler, 140-0078 Mounting Bands (2) and Parts Marked (*))
1	MANIFOLD, EXHAUST		
	154-0704	1	Spec A and B Begin Spec C
	154-0725	1	Sets Without Air Duct or Air Duct and Shutters
	154-0704	1	Sets With Air Duct or Air Duct and Shutters
3	154-0463	1	Gasket, Manifold
4	MUFFLER, EXHAUST		
	155-0330	1	Unhoused Sets - 1-1/4" Inlet
	155-0456	1	Housed Sets - 1-1/2" Inlet
5	TUBE, EXHAUST - FLEXIBLE		
	155-0492	1	Unhoused Sets
	155-0849	1	Housed Sets
	155-0951	1	*Housed Sets with 155-0360 Critical Muffler
6	505-0036	1	Coupling, Pipe - Reducer (1-1/2" to 1-1/4") Housed Sets
7	505-0031	1	Coupling, Pipe - Reducer (1-1/4") Unhoused and Skid Mounted Sets
10	505-0183	1	*Elbow, Pipe - Reducer (1-1/2" x 1-1/4" x 90°)
11	505-0043	1	*Elbow, Pipe - (1-1/2" x 90°) Housed Sets
13	110-0445	2	Nut, Hex (Special)
14	154-1665	1	Tab, Lock
15	155-0824	1	Muffler, Exhaust - Skid Mounted Sets
16	505-0177	1	Nipple, Pipe (1-1/4" x Close) Skid Mounted Sets

* - Parts Included in 155-1898 Critical Muffler Exhaust Package

ANTI-FLICKER AND STOP SOLENOID



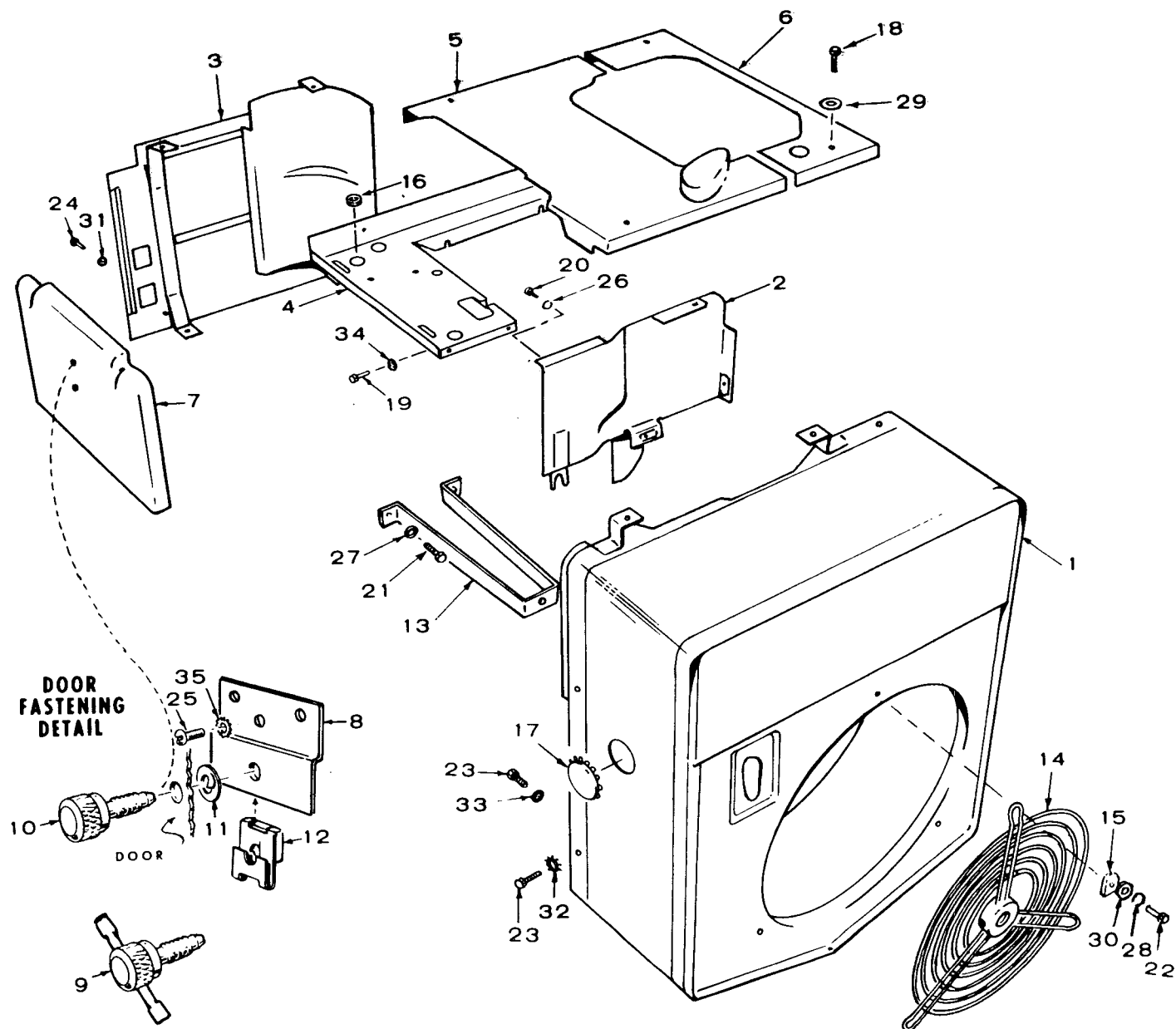
ES-1433

REF. NO.	PART NO.	QTY. USED	PART DESCRIPTION	REF. NO.	PART NO.	QTY. USED	PART DESCRIPTION
1	166-0316	1	Point Set, Anti-Flicker - Key 1,2	8	SOLENOID, DECOMPRESSION RELEASE		
2	160-0800	1	Plunger, Breaker - Key 1,2				Key 1 (12 Volt)
3	160-0799	1	Guide, Breaker Plunger - Key 1,2	307-0628	1		Spec A through S
4	160-0382	1	Diaphragm, Breaker Plunger - Key 1,2	307-1098	1		Begin Spec T
5	509-0091	1	Seal, "O" Ring - Key 1,2				Key 2,4 (32 Volt)
6	COVER, ANTI-FLICKER - Key 1,2			307-0680	1		Spec A through S
	160-0796	1	Spec A through Portion of Spec V (Sets with Feed Thru Condenser Mounted in Control)	307-1100	1		Begin Spec T
	160-0918	1	Use Began During Spec V (Sets with Feed Thru Condenser Mounted on Anti-Flicker Cover)				Key 3 (24 Volt)
7	312-0083	1	Condenser, Feed Thru (1.75 Mfd) Key 1,2 Use Began During Spec V (Cover Mounted)	307-0668	1		Spec A through S
				307-1099	1		Begin Spec T
				9	306-0167	1	Plunger, Solenoid - Includes Pin
				10	306-0166	1	Spring, Solenoid Plunger
				11	509-0018	1	Seal, O-Ring - Stop Solenoid
				12	307-0736	1	Gasket, Solenoid Mounting
				13	337-0051	1	Strap, Ground Solenoid to Engine
				14	RESISTOR, DECOMPRESSION RELEASE SOLENOID - BEGIN SPEC T		
					304-0003	1	Key 1 (For 12 Volt Solenoid)
					304-0110	1	Key 2,3 (For 32 Volt Solenoid)
					304-0078	1	Key 3 (For 24 Volt Solenoid)

ANTI-FLICKER AND STOP SOLENOID

REF. NO.	PART NO.	QTY. USED	PART DESCRIPTION
15	304-0292	1	Insulator, Resistor
16	WASHER, RESISTOR CENTERING		
	304-0427	2	Key 1,2,4 (12 and 32 Volt)
	304-0014	2	Key 3 (24 Volt)
17	336-1366	1	Lead-Control to Anti-Flicker Key 1,2 - Spec A through portion of Spec V (Sets With Feed Thru Condenser Mounted in Control)
18	812-0059	2	Screw, Machine - Round Head (#6-32 x 1/4") Key 1,2 - Use Began During Spec V
19	853-0003	4	Washer, Lock - ET (#6) Key 1,2 - Use Began During Spec V
20	860-0006	2	Nut, Hex (#6-32) Key 1,2 - Use Began During Spec V
21	811-0096	2	Screw, Machine - Round Head (#10-32 x 1/4") - Key 1,2 Use Began During Spec V
22	854-0010	2	Washer, Lock - IT (#10) Key 1,2 - Use Began During Spec V

AIR HOUSING



M-1151

AIR HOUSING

REF. NO.	PART NO.	QTY. USED	PART DESCRIPTION	REF. NO.	PART NO.	QTY. USED	PART DESCRIPTION
1	134-1050	1	Housing, Blower	23	815-0235	6	Screw, Cap - Hex Head - Blower Housing Mounting (1/4-20 x 5/8")
2	134-1048	1	Housing, Cylinder Air - Front	24	813-0097	1	Screw, Machine - Round Head - Rear Air Housing Mounting (10-32 x 5/16")
3	134-1127	1	Housing, Cylinder Air - Rear	25	813-0098	2	Screw, Machine - Round Head - Air Housing Door Bracket Mounting (10-32 x 3/8")
4	134-1102	1	Panel, Cylinder Air Housing (Bottom)	26	850-0040	4	Washer, Lock - Spring - Cylinder Air Housing Mounting (1/4")
5	134-1130	1	Cover, Nozzle and Housing	27	850-0045	2	Washer, Lock - Spring - Blower Housing Support Mounting (5/16")
6	134-1131	1	Cover, Housing, Plain	28	850-0040	3	Washer, Lock - Spring - Grille Mounting (1/4")
7	134-1117	1	Panel, Air Housing Door	29	526-0021	4	Washer, Flat - Cylinder Air Housing Mounting (17/64" ID x 3/4" OD x 1/16" Thk)
8	134-1082	1	Bracket, Air Housing Door Panel	30	526-0115	3	Washer, Flat - Grille Mounting (.200" ID x 3/8" OD x 1/32" Thk)
9	134-1373	1	Screw, Door	31	854-0010	1	Washer, Lock - Flat Internal Tooth - Rear Air Housing Mounting (#10)
10	800-0004	4	Screw, Top Cover	32	853-0013	1	Washer, Lock - Flat External Tooth - Front Air Housing Mounting (1/4")
11	134-1180	1	Washer, Door (Early Models 8 for Top Cover)	33	854-0014	6	Washer, Lock - Flat Internal Tooth - Blower Housing Mounting (1/4")
12	870-0194	5	U-Clip, Door Panel & Cover	34	854-0013	1	Washer, Lock - Flat Internal Tooth - Bottom Air Housing Mounting (#12)
13	134-1085	1	Support, Blower Housing & Grille	35	853-0008	2	Washer, Lock - Flat External Tooth - Air Housing Door Bracket Mounting (#8)
14	134-1178	1	Grille and Plate				
15	134-1092	3	Retainer, Grille				
16	GROMMET, RUBBER						
	508-0002	1	17/32" Hole				
	508-0021	3	3/4" Hole				
17	517-0035	1	Plug, Dot Button				
18	800-0004	4	Screw, Cap - Hex Head - Cylinder Air Housing Cover Mounting (1/4-20 x 5/8")				
19	815-0235	1	Screw, Cap - Hex Head - Front Cylinder Air Housing Mounting (1/4-20 x 5/8")				
20	815-0235	1	Screw, Cap - Hex Head - Cylinder Air Housing Panel Mounting (1/4-20 x 5/8")				
21	800-0024	2	Screw, Cap - Hex Head - Blower Housing Support Mounting (5/16-18 x 1/2")				
22	800-0007	3	Screw, Cap - Hex Head - Grille Mounting (1/4-20 x 1")				



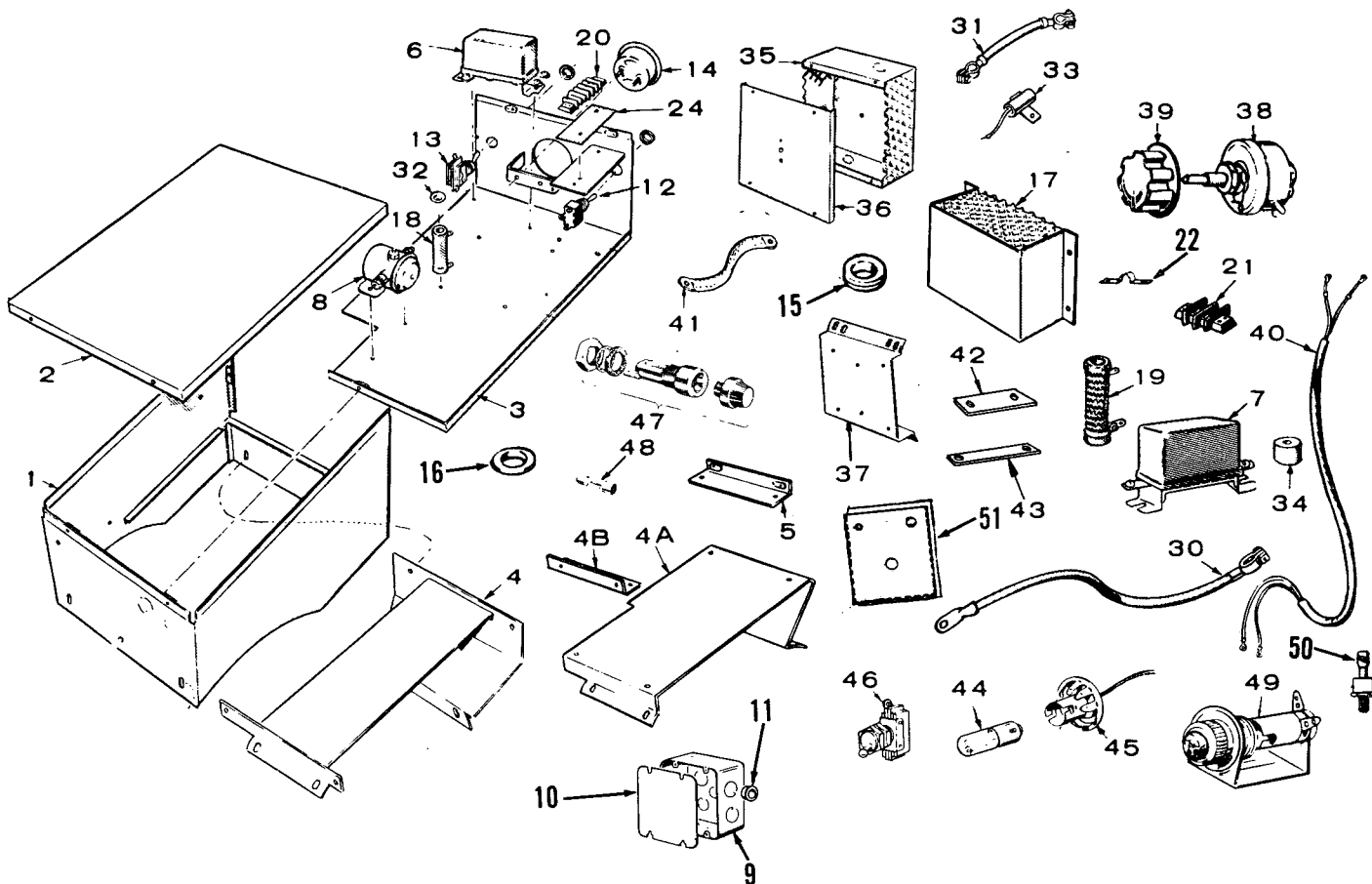
9A	COIL ASSEMBLY, SET OF 2 COILS		
	222-1607	1	Key 3
	222-1614	1	Key 4
10	RIG ASSEMBLY, BRUSH		Key 1
	212-0392	1	120 Volt & 240 Volt, 1 Phase
	212-0394	1	120/240 Volt (Non-Reconnectible)
	212-0415	1	120/240 Volt - Reconnectible
	212-0395	1	240 Volt, 3 Phase
	212-0398	1	Key 2
	212-0116	1	Key 3
	212-0383	1	Key 4
	212-0399	1	Key 1 - Contactors
	SPRING, BRUSH		
11	212-1105	8	120 Volt, 240 Volt (1 Phase) & 120 AC/32DC Volt, Key 1, 2 - AC & DC
11	212-1106	4	Key 4, Commutator (DC)
11	212-1105	7	120/240 Volt, 1 Phase (Non-Reconnectible) & 240 Volt, 3 Phase, AC & DC, Key 1 - Begin Spec D
11	212-1105	12	120/240 Volt, 1 Phase (Reconnectible) - Key 1 Begin Spec V
11	212-1105	8	120/240 Volt, 1 Phase (Reconnectible) - Key 1 Prior to Spec V
12	212-1003	4	120/240 Volt, 1 Phase & 240 Volt, 3 Phase, DC, Key 1 - Spec A through C
12	212-1004	3	120/240 Volt, 1 Phase & 240 Volt, 3 Phase, AC, Key 1 - Spec A through C
12	212-1011	4	Key 3, Commutator (DC)

GENERATOR

REF. NO.	PART NO.	QTY. USED	PART DESCRIPTION
13	BRUSH, COMMUTATOR (DC)		
			Key 1
	214-0061	4	120 Volt & 240 Volt, 1 Phase
	214-0030	4	120/240 Volt, 1 Phase - Spec A through C
	214-0061	4	120/240 Volt, 1 Phase - Begin Spec D
	214-0030	4	240 Volt, 3 Phase - Spec A through C
	214-0061	4	240 Volt, 3 Phase - Begin Spec D
	214-0009	4	Key 2 - Spec A through C
	214-0083	4	Key 2 - Begin Spec D
	214-0018	4	Key 3
	214-0068	4	Key 4
14	BRUSH, COLLECTOR RING (AC)		
			Key 1
	214-0050	4	120 Volt & 240 Volt, 1 Phase
	214-0079	3	120/240 Volt, 1 Phase - Spec A through C (Non-Reconnectible)
	214-0050	3	120/240 Volt, 1 Phase - Begin Spec D (Non-Reconnectible)
	214-0050	8	120/240 Volt, 1 Phase (Reconnectible) - Begin Spec V
	214-0056	4	120/240 Volt, 1 Phase (Reconnectible) - Prior to Spec V
	214-0032	3	240 Volt, 3 Phase - Spec A through C
	214-0050	3	240 Volt, 3 Phase - Begin Spec D
	214-0050	4	Key 2
15	BELL, END		
			Key 1
	211-0097	1	120 Volt & 240 Volt, 1 Phase
	211-0098	1	120/240 Volt, 1 Phase, & 240 Volt, 3 Phase
	211-0097	1	Key 2, 3, 4
16	520-0502	2	Stud, Generator Through
17	STUD, ARMATURE THROUGH		
			Key 1
	520-0491	1	120 Volt & 240 Volt, 1 Phase
	520-0525	1	120/240 Volt, 1 Phase & 240 Volt, 3 Phase
	520-0491	1	Key 2, 3, 4
18	232-1256	1	Scroll, Generator Air
19	BAND, END BELL		
			Key 1
	234-0002	1	120 Volt & 240 Volt, 1 Phase
	234-0005	1	120/240 Volt, 1 Phase & 240 Volt, 3 Phase
	234-0002	1	Key 2, 3, 4
	234-0228	1	Housed Sets
20	COVER, END BELL		
	211-0099	1	Unhoused Sets
	234-0229	1	Housed Sets

REF. NO.	PART NO.	QTY. USED	PART DESCRIPTION
21	CONDENSER		
			Key 1
	312-0058	1	AC (.1 Mfd), 120 Volt & 240 Volt, 1 Phase
	312-0058	2	AC (.1 Mfd), 120/240 Volt, 1 Phase (Non-Reconnectible)
	312-0058	3	AC (.1 Mfd), 240 Volt, 3 Phase & 120/240 Volt, 1 Phase (Reconnectible)
	312-0027	1	DC (.5 Mfd), 120 Volt, 240 Volt & 120/240 Volt, 1 Phase
	312-0017	1	DC (.5 Mfd), 240 Volt, 3 Phase
			Key 2
	312-0058	1	AC (.1 Mfd)
	312-0027	1	DC (.5 Mfd)
			Key 3
	312-0017	2	DC (.5 Mfd)
			Key 4
	312-0017	1	DC (.5 Mfd)
	312-0027	1	DC (.5 Mfd)
22	COMMUTATOR		
	203-0127	1	Key 1
	203-0009	1	Key 2
	203-0058	1	Key 3
	203-0088	1	Key 4
23	COLLECTOR RING		
	204-0009	1	Key 1 (120 Volt, 240 Volt, 1 Phase) & Key 2
	204-0010	1	Key 1 (120/240 Volt, 1 Phase) (Non-Reconnectible) & 3 Phase - 240 Volt, 3 Phase
	204-0092	1	Key 1 (120/208 Volt, 3 Phase)
	204-0092	1	Key 1 (120/240 Volt, 1 Phase) Reconnectible
24	SCREW, CAP - HEX HEAD - GENERATOR ADAPTER MOUNTING		
	800-0050	2	3/8-16 x 1"
	800-0051	2	3/8-16 x 1-1/4"
	WASHER, LOCK - SPRING		
25	850-0050	4	Generator Adapter Mounting (3/8")
26	850-0045	2	Generator Through Stud (5/16")
27	526-0032	1	Washer, Flat (7/16") - Armature Through Stud
	NUT, HEX		
28	862-0004	1	Armature Through Stud (7/16-14")
29	862-0015	2	Generator Through Stud (5/16-18)
30	850-0055	1	Washer, Lock - Spring - Armature Through Stud (7/16")
31	800-0032	8	Screw, Cap - Hex Head (5/16-18 x 1-3/4") - Pole Shoe Mounting
32	516-0103	2	Pin, Roll
33	515-0122	1	Key, Blower to Armature

CONTROL



REF. NO.	PART NO.	QTY. USED	PART DESCRIPTION	REF. NO.	PART NO.	QTY. USED	PART DESCRIPTION
1	301-2008	1	Box, Control	11	331-0088	1	Bushing, Junction Box (Housed Sets)
2	301-1963	1	Cover, Control	12	308-0154	1	Switch, Start/Stop
3	PANEL, CONTROL BOX			13	SWITCH		
	301-2009	1	Key 1,5		308-0037	1	Manifold Heater
	301-2295	1	Key 2		308-0007	1	Hi-Low Charge - Key 2
	301-2274	1	Key 3,4	14	AMMETER, CHARGE		
4		1	Bracket, Control Box Mounting, One Piece (Order 301-2424, 301-2425 and 301-2426)		302-1366	1	Key 1,5 (5-0-5)
4A	301-2424	1	Bracket, Control Box Mounting		302-1362	1	Key 2 (30-0-30)
4B	301-2425	1	Bracket, Control Box Mounting, Right Hand		302-0064	1	Key 3,4 (100-0-100)
5	301-2426	1	Bracket, Control Box Mounting, Left Hand	15	508-0001	2	Grommet, Rubber - Voltage Code FB - Key 1, Voltage Code FJ - Key 5
6	307-0004	1	Relay, Decompression Solenoid Relay	16	508-0015	2	Washer, Fiber - Voltage Code FB - Key 1, Voltage Code FJ - Key 5
7	RELAY, REVERSE CURRENT			17	301-2012	1	Cover, Resistor - Key 1,5
	307-0180	1	Key 1,5	18			Resistor, Fixed
	307-0496	1	Key 2		304-0032	1	15-Ohm, 10 Watt - Key 1,5
	307-0007	1	Key 3		304-0257	1	75-Ohm, 25 Watt - Key 2
	307-0361	1	Key 4		304-0011	1	50-Ohm, 25 Watt - Key 3
8	SOLENOID, MANIFOLD HEATER AND START				304-0256	1	75-Ohm, 25 Watt - Key 4
	307-1046	2	Key 1,5	19			Resistor, Adjustable
	307-0061	2	Key 2,3,4		304-0506	1	6-Ohm, 150 Watt - Key 1,2,5
9	330-0011	1	Box, Junction (Housed Sets)		304-0175	1	1-Ohm, 50 Watt, Flicker - Key 1,5
10	330-0012	1	Cover, Junction Box (Housed Sets)		304-0016	1	2.5-Ohm, 50 Watt, Flicker - Key 2

CONTROL

REF. NO.	PART NO.	QTY. USED	PART DESCRIPTION	REF. NO.	PART NO.	QTY. USED	PART DESCRIPTION
20			Block, Terminal	38	RHEOSTAT		
	332-0537	1	4 Place		303-0046	1	Key 3 (10-Ohm)
	332-0537	2	Key 2 - Remote Control		303-0010	1	Key 4 (8-Ohm)
			Key 3,4 - Remote Control	39	303-0047	1	Knob, Rheostat - Key 3,4
	332-0604	1	(1) Terminal Load (1)	40	HARNES, WIRING		
			5 Place - Key 1,2,5 -		338-0313	1	Rheostat - Key 3,4
			Remote Control		338-0496	1	Control to Output Box -
21	332-0609	1	Block, Terminal - 2 Place,				Housed Sets
			Terminal Load - Key 1		338-0939	1	Control to Housing Start/
22	332-1043	1	Jumper, Terminal - Voltage				Stop - Housed Sets
			Code FB - Key 1,5	41	337-0036	1	Strap, Bond 5"
24			Strip, Marker	42	332-0592	1	Jumper, Ground
	332-0616	1	B+, 1,2,3 H	43	332-0602	1	Jumper, Solenoid
	332-0554	1	F2, 4,5,6 - Key 2,3,4	44	LAMP		
30			Cable, Battery - Key 1,2		322-0004	As Req	Indicator - Sets With
	416-0077	2	Sets Without Housing or				Indicator Lamp
			Skid Mounting (28")		322-0004	2	Panel Light - Housed Sets
	416-0050	2	Sets With Housing or Skid	45	322-0072	2	Receptacle, Panel Light -
			Mounting (36")				Housed Sets
31	416-0133	1	Cable, Battery Jumper	46	308-0002	1	Switch, Panel Light -
32	304-0006	2	Washer, Resistor Centering				Housed Sets
33	312-0057	1	Condenser, Anti-Flicker	47	321-0175	1	Holder, Fuse - Begin Serial
			(1.0 Mfd) Key 1,2 (Used				Number B780303772 During
			Spec A through Portion of				Spec V
			Spec V) Sets With Feed Thru	48	321-0146	1	Fuse (10 Amp) Begin
			Condenser Mounted in Control				Serial Number B780303772
							During Spec V
34	402-0078	4	Mount, Rubber - Control Box	49	322-0069	AR	Holder, Indicator Lamp - Sets
35	301-2290	1	Box, Rheostat Mounting -				With Indicator Lamp
			Key 3,4	50	305-0673	1	Rectifier (CR1) Begin Spec V
36	301-2291	1	Panel, Rheostat Box - Key 3,4	51	305-0254	1	Bracket, Rectifier Mounting
37	301-2129	1	Bracket, Rheostat Box Mounting				
			- Key 3,4				

SERVICE KITS & MISCELLANEOUS

PART NO.	QTY. USED	PART DESCRIPTION
98-1100	1	Decal Kit
168-0085	1	Gasket Kit, Set
OVERHAUL KIT, SET		
522-0200	1	Spec A through R
522-0249	1	Begin Spec S
TOUCH-UP PAINT (13 oz. Pressurized Can)		
525-0137	1	Metallic Green
525-0305	1	Non-Metallic Green
525-0454	1	Greige - Enamel

NOTE: For other kits refer to the related group for the part in question.

SPECIAL PARTS SECTION

CONTRACTOR MODELS

For:

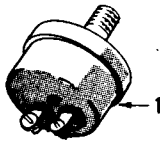
2.5 DJA-53CE/

3.0DJA-1E/ & 3.0DJA-3E/

(Formerly 3DJA-1E2236/ & 3DJA-3E2236/)

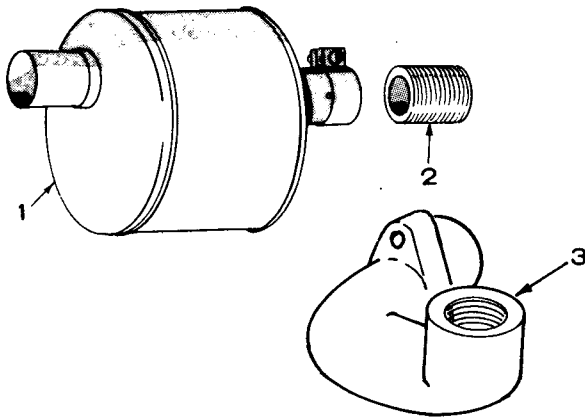
Parts not Listed in this section refer to the standard parts groups,
using Parts Key 1. Exception: Overhaul Kits do not apply.

OIL SYSTEM



REF. NO.	PART NO.	QTY. USED	PART DESCRIPTION
1	309-0105	1	Switch, Oil Pressure - Decompression Release Solenoid Cut-In

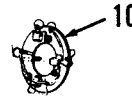
EXHAUST SYSTEM



REF. NO.	PART NO.	QTY. USED	PART DESCRIPTION
1	155-0824	1	Muffler, Exhaust
2	505-0177	1	Nipple, Pipe Close - Exhaust
3	154-0704	1	Manifold, Exhaust

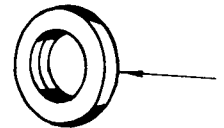
Generator

REF NO.	PART NO.	QTY USED	PART DESCRIPTION
10	212-0399	1	Brush Rig



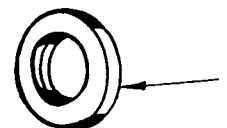
CYLINDER BLOCK AND OIL BASE

REF. NO.	PART NO.	QTY. USED	PART DESCRIPTION
1	509-0112	1	Seal, Crankshaft Rear

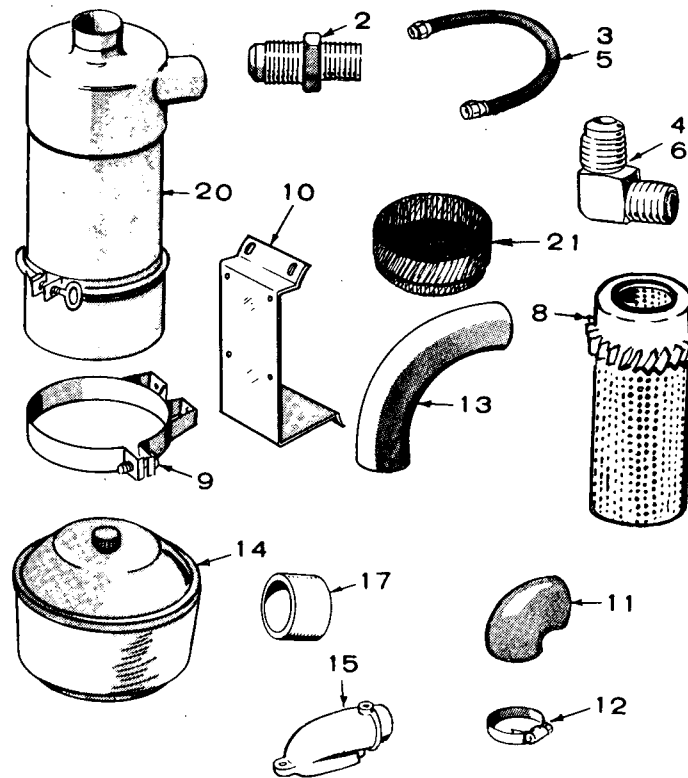


GEARCASE

REF. NO.	PART NO.	QTY. USED	PART DESCRIPTION
1	509-0111	1	Seal, Oil - Gear Cover
2	103-0454	1	Gearcase Assembly, Complete (Not Illustrated)



AIR CLEANER AND FUEL FILTER

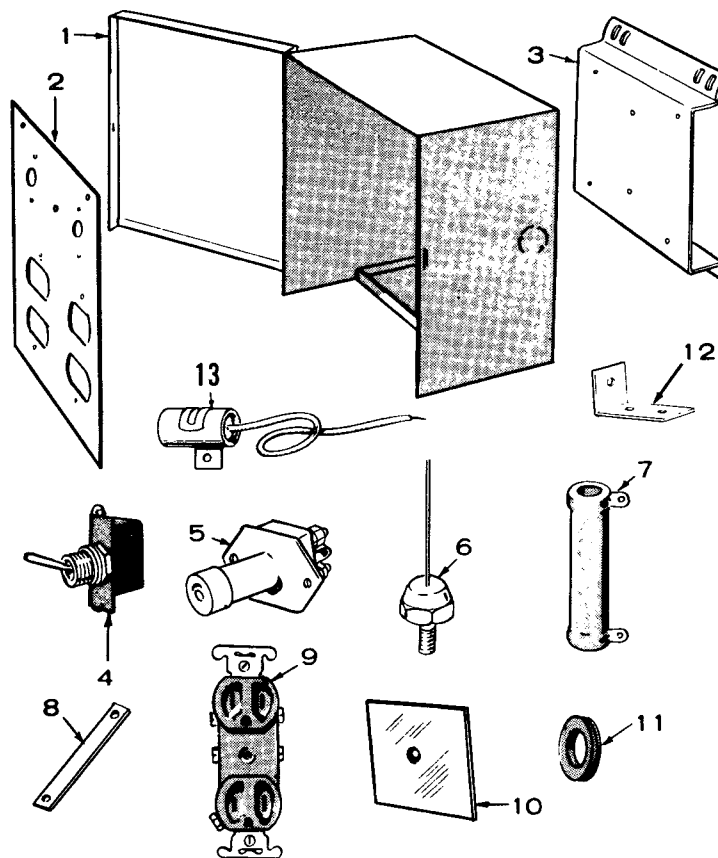


REF. NO.	PART NO.	QTY. USED	PART DESCRIPTION
2	502-0137	1	Connector, Male, Fuel Pump Outlet - Spec A through R
3	501-0098	1	Line, Pump to Secondary Filter - Spec A through R
4	502-0148	1	Elbow, Male, Secondary Filter Inlet - Spec A through R
4	502-0148	1	Elbow, Male, Secondary Filter Outlet - Spec A through R
5	501-0096	1	Line, Secondary Filter to Injection Pump - Spec A through R
6	502-0148	1	Elbow, Male, Injection Pump Inlet - Spec A through R
8	140-0765	1	Element Only, Air Cleaner
9	140-0722	2	Band, Air Cleaner Mounting
10	140-0728	1	Bracket, Air Cleaner
11	503-0419	1	Elbow, Air Cleaner, Rubber
12	503-1141	4	Clamp, Hose, Air Cleaner
13	140-0742	1	Tube, Air Induction
14	140-0723	1	Pre-Cleaner, Air Cleaner (Plastic)
15	140-0645	1	Adapter, Air Cleaner Hose to Air Cleaner Adapter
17	503-0330	1	Hose, Air Cleaner Connector
20	140-0721	1	Cleaner, Air - Includes Element and Baffle
21	140-1267	1	Baffle, Air Cleaner

SPECIAL PARTS SECTION

CONTRACTOR MODELS

CONTROL

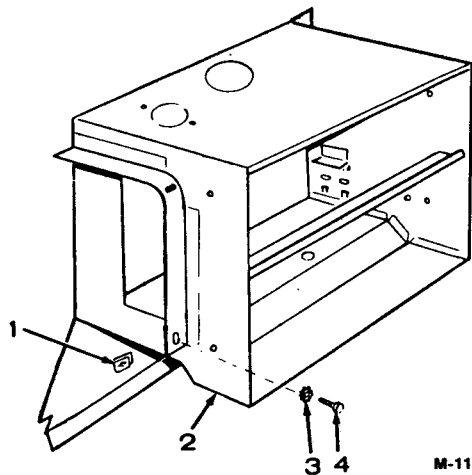


REF. NO.	PART NO.	QTY. USED	PART DESCRIPTION
1	301-2302	1	Box, Control
2	301-2293	1	Panel, Control Box
3	301-2129	1	Bracket, Control Box Mounting
4	308-0069	1	Switch, Stop-Run
5	308-0028	2	Switch (1) Start (1) Heater
6	305-0673	1	Rectifier (10 Amp, 100 Volt Peak)
7	304-0175	1	Resistor, Adjustable (1.0 Ohm, 50 Watt) Air Cleaner Bracket Mounted
8	332-0602	1	Jumper, Heater Switch to Start Switch
9	RECEPTACLE, DUPLEX		
	323-0383	2	120 Volt, 1 Phase 2 Wire Model
	323-0383	1	120/240 Volt, 1 Phase, 3 Wire Model
	323-0213	1	120/240 Volt, 1 Phase, 3 Wire Model
10	305-0256	1	Sink, Heat (Rectifier)
11	GROMMET, RUBBER		
	508-0008	1	13/16" Hole
	508-0009	1	1-3/8" Hole
	508-0026	1	13/32" Hole
12	304-0117	2	Bracket, Resistor Mounting
13	312-0057	1	Condenser (1.0 Mfd) Air Cleaner Bracket Mounted

OPTIONAL PARTS SECTION

This section contains illustrated parts listings of factory installed options. Options may not be applicable to all models; for field conversions additional parts are usually required.

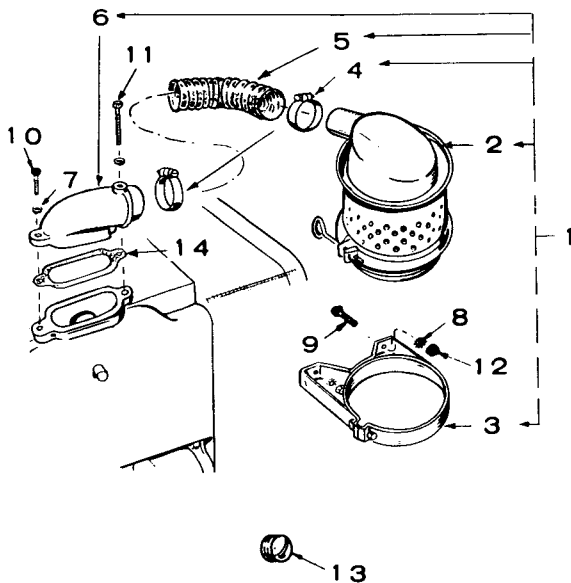
AIR DUCT — OPTIONAL



M-1153

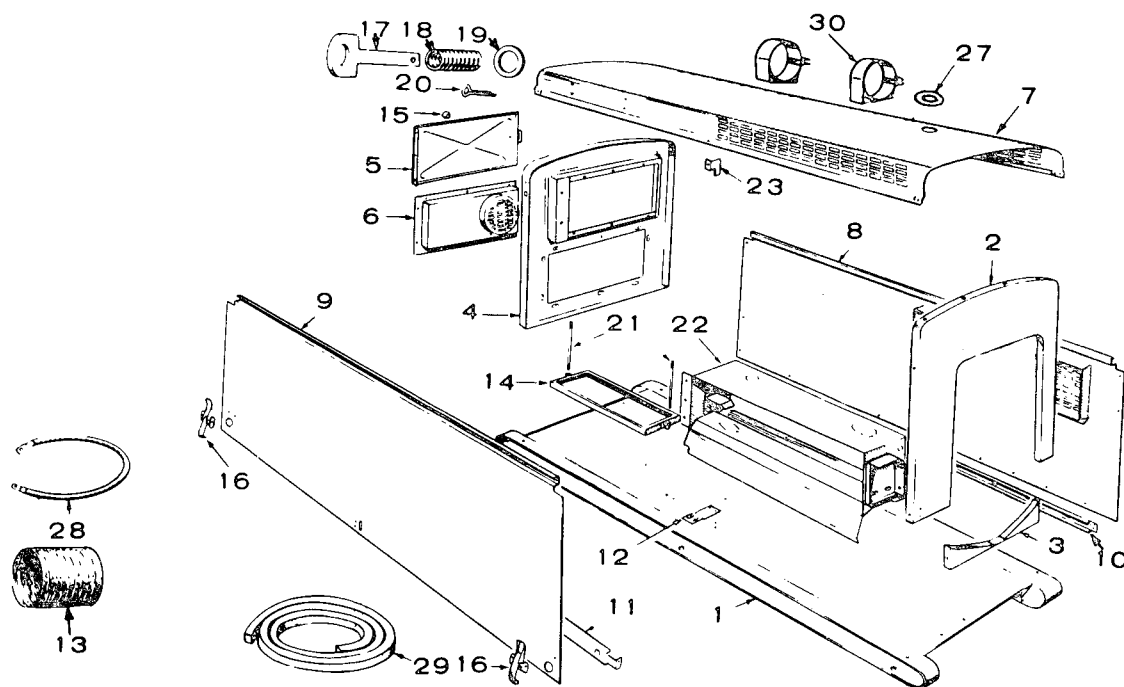
REF. NO.	PART NO.	QTY. USED	PART DESCRIPTION
1	870-0178	3	Nut, Speed - Sheet Metal (1/4-20)
2	134-1806	1	Duct, Air
3	853-0013	3	Washer, Lock - ET (1/4")
4	815-0235	3	Screw, Cap - Hex Head, Pointed End (1/4-20 x 5/8")

OIL BATH AIR CLEANER - OPTIONAL



REF. NO.	PART NO.	QTY. USED	PART DESCRIPTION
1	140-0677	1	Conversion Kit, Oil Bath Air Cleaner (Includes Parts Listed Below - Plus Hardware)
2	140-0500	1	Cleaner, Air
3	140-0519	1	Band, Air Cleaner
4	503-1141	2	Clamp, Air Cleaner Hose
5	503-0444	1	Hose, Air Cleaner to Adapter
6	140-1212	1	Adapter, Air Cleaner
7	850-0040	2	WASHER, LOCK SPRING Upper Adapter Mounting - 1/4"
8	850-0040	2	Band Mounting - 1/4"
9	800-0003	2	SCREW, CAP - HEX HEAD Band Mounting - 1/4-20 x 1/2"
10	800-0007	1	Upper Adapter Mounting 1/4-20 x 1"
11	800-0015	1	Upper Adapter Mounting - 1/4-20 x 3"
12	862-0001	2	Nut, Hex - Band Mounting 1/4-20
13	505-0008	1	Plug, Pipe - Cleaner Adapter 1/8"
14	140-0584	1	Gasket, Air Cleaner

HOUSING AND SKID BASE — OPTIONAL

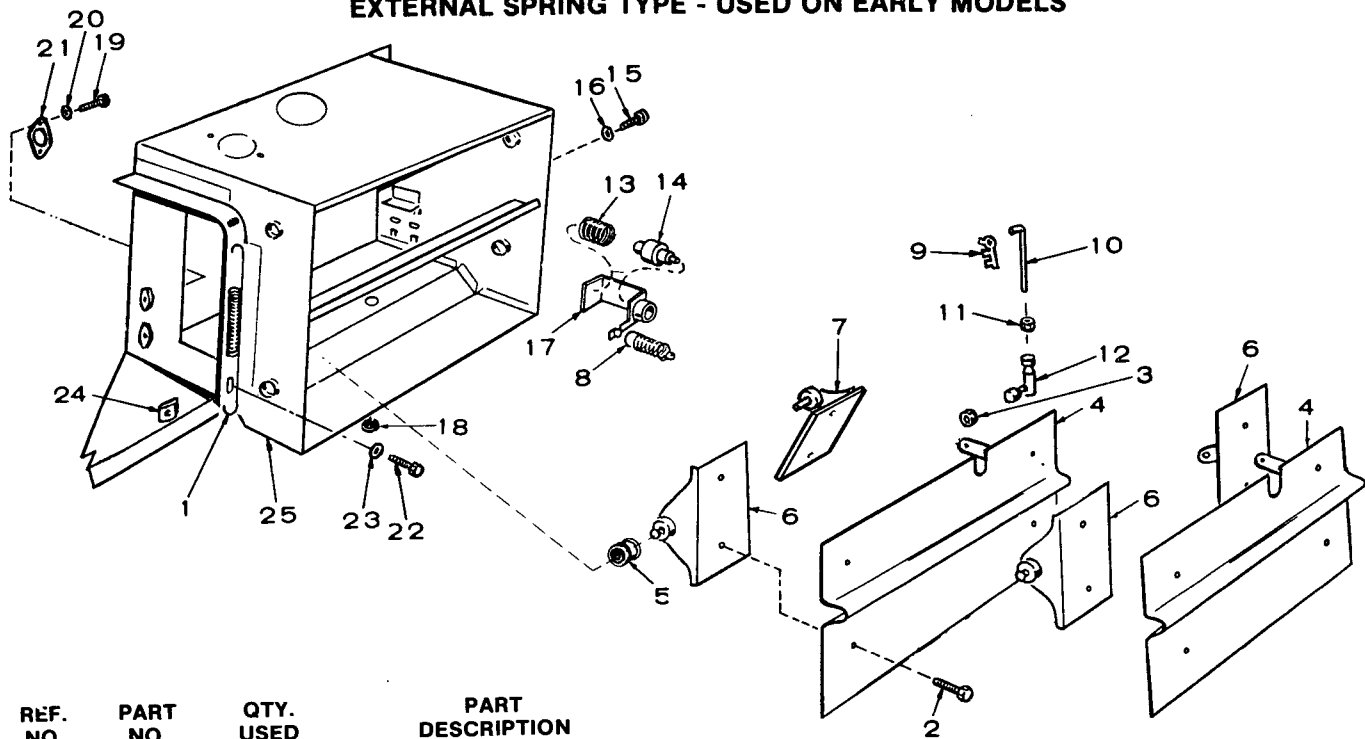


M-1152

REF. NO.	PART NO.	QTY. USED	PART DESCRIPTION
1	403-0679	1	Base
2	405-1323	1	Panel, Upper (Engine End)
3	405-1333	1	Panel, Lower (Engine End)
4	PANEL (Generator End) - REAR		
	405-1322	1	Sets Without Meter Panel
	405-1331	1	Sets With Meter Panel
5	PANEL, DOOR - REAR END		
	405-1329	1	Sets Without Meter Panel
	405-1332	1	Sets With Meter Panel
6	405-1330	1	Panel, Generator Access
7	405-1348	1	Panel, Top
8	PANEL - RIGHT SIDE		
	405-1386	1	Sets Without Shutters
	405-1391	1	Sets With Shutters
9	405-1346	1	Panel, Left Side
10	405-1344	1	Rail, Stiffener - Right Side
11	405-1345	1	Rail, Stiffener - Left Side
12	405-1341	2	Bracket, Stiffener Rail
13	503-0423	1	Hose, Flexible - Generator Air Duct
14	416-0502	1	Frame, Battery Holddown
15	406-0002	1	Knob, Rear Door Panel
16	406-0105	2	Fastener, Housing
17	405-1138	2	Pin, Shoulder - Rear Panel

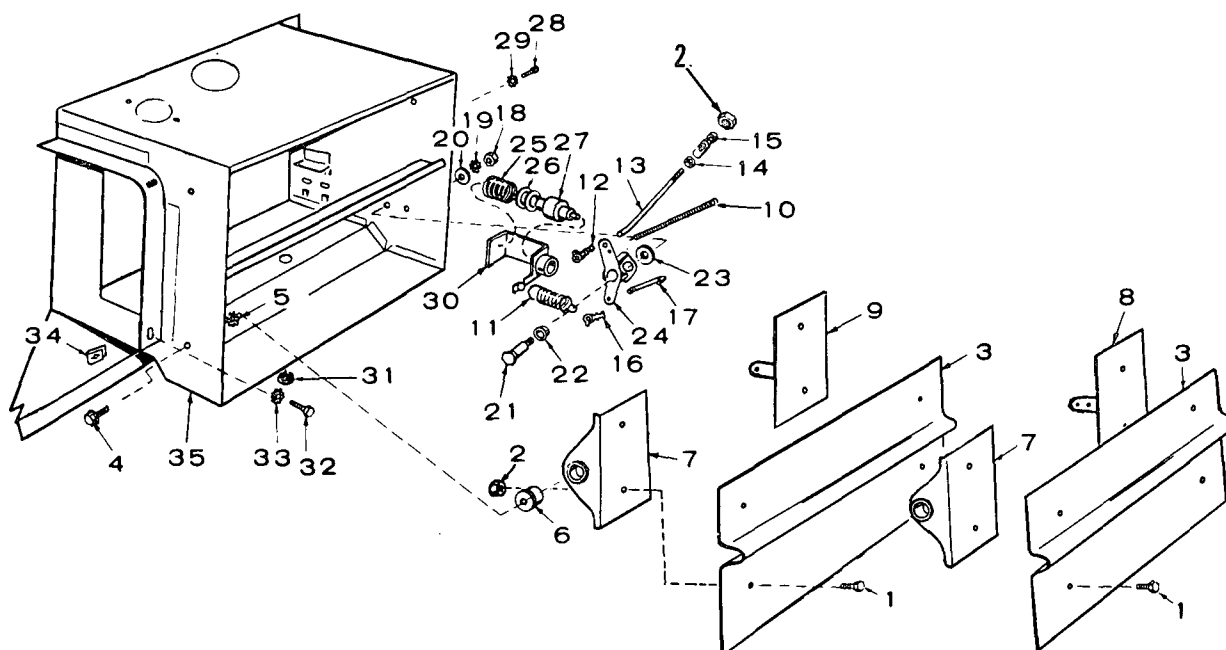
REF. NO.	PART NO.	QTY. USED	PART DESCRIPTION
18	405-1139	2	Spring, Shoulder Pin - Rear Panel
19	526-0022	2	Washer, Shoulder Pin - Rear Panel
20	516-0039	2	Pin, Shoulder
21	520-0490	2	Stud, Battery Holddown
22	DUCT, EXHAUST MANIFOLD (See Separate Group for Components)		
	134-1806	1	Sets Without Shutters
	134-1809	1	Sets With Shutters
23	405-1181	2	Stop, Door
27	405-1673	1	Shield, Rain
28	336-0476	1	Strap, Ground - Engine to Frame
29	895-0104	1	Stripping, Foam Weather (76")
30	BAND, MUFFLER MOUNTING		
	140-0631	2	For Mounting 155-0456 (Standard) Muffler
	140-0078	2	For Mounting 155-0360 (Critical) Muffler

AIR DUCT AND SHUTTER - OPTIONAL **EXTERNAL SPRING TYPE - USED ON EARLY MODELS**



REF. NO.	PART NO.	QTY. USED	PART DESCRIPTION
	134-1253	1	Air Duct and Shutter Assembly (External Spring Type) For Replacement Order 134-1809 Air Duct and Shutter Assembly (Internal Spring Type)
1	134-1437	2	Spring, Shutter Pivot
2	815-0194	8	Screw, Tapping - Hex Head with External Tooth Lockwasher (#10-32 x 3/8")
3	870-0131	1	Nut, Hex - With External Tooth Lockwasher (#10-32)
4	134-1256	2	Shutter, Air
5	134-1248	4	Bearing - Shutter Pivot
6	134-1242	3	Bracket and Pivot - Shutter
7	134-1238	1	Bracket and Pivot Shaft & Pin
8	134-0658	1	Spring - Shutter Return
9	518-0006	1	Clip, Rod End - Left Hand
10	134-1247	1	Rod, Control - Shutter
11	870-0053	1	Nut, Hex (#10-32)
12	150-1358	1	Joint, Ball
13	134-0656	1	Spring - Vernatherm Element
14	309-0085	1	Element, Vernatherm
15	813-0097	2	Screw, Machine - Round Head (#10)
16	854-0010	2	Washer, Lock - Internal Tooth (#10)
17	134-1244	1	Bracket & Guide - Vernatherm
18	508-0002	1	Grommet, Rubber
19	812-0075	2	Screw, Machine - Round Head (#8-32 x 1/4")
20	854-0007	2	Washer, Lock - Internal Tooth (#8)
21	309-0162	1	Switch, High Temperature - Optional
22	815-0235	3	Screw, Cap - Hex Head - Pointed End (1/4-20 x 5/8")
23	853-0013	3	Washer, Lock - External Tooth (1/4")
24	870-0178	3	Nut, Sheet Metal, Spring (1/4-20)
25	134-1254	1	Duct, Air

AIR DUCT AND SHUTTER - OPTIONAL **INTERNAL SPRING TYPE - USED ON CURRENT MODELS**

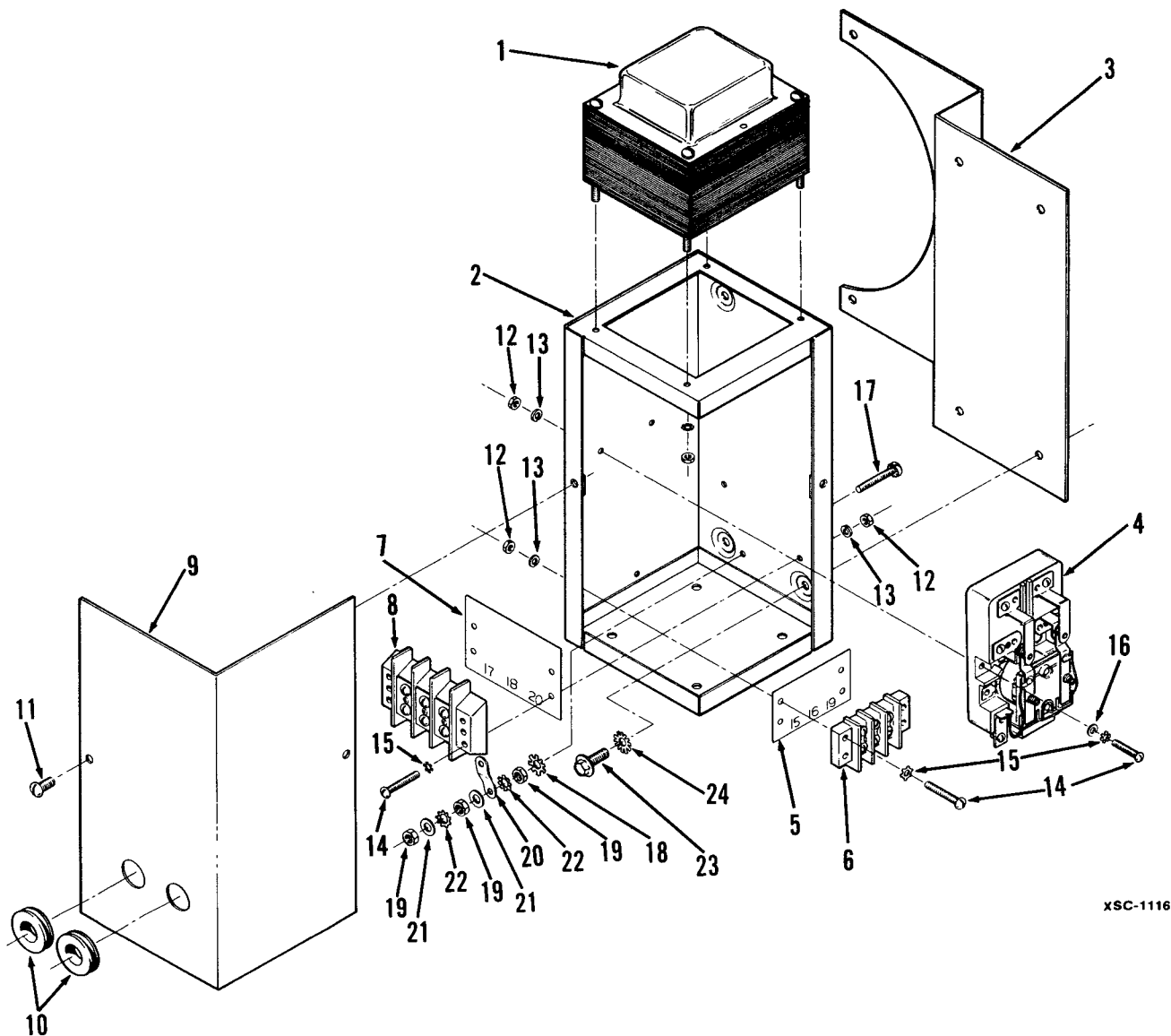


M-1522

REF. NO.	PART NO.	QTY. USED	PART DESCRIPTION	REF. NO.	PART NO.	QTY. USED	PART DESCRIPTION
	134-1809	1	Air Duct and Shutter Assembly (Internal Spring Type) Replaces 134-1253 Air Duct and Shutter Assembly (External Spring Type)	18	862-0015	1	Nut, Jam (5/16-18)
1	815-0194	8	Screw, Tapping - Hex Head with External Tooth Lockwasher (#10-32 x 3/8")	19	853-0016	1	Washer, Lock - External Tooth (5/16")
2	870-0131	9	Nut, Hex - With External Tooth Lockwasher (#10-32)	20	526-0113	1	Washer, Flat (11/32" ID x 1" OD x 3/32" Thk)
3	134-1808	2	Shutter, Air	21	134-1605	1	Shaft - Actuating Arm
4	821-0010	4	Screw, Self-locking - Hex Washer Head (1/4-20 x 1/2")	22	134-1248	2	Bearing - Actuating Arm
5	856-0006	4	Washer, Lock - External Tooth (1/4")	23	526-0213	1	Washer, Flat (21/64" ID x 1" OD x 1/8" Thk)
6	134-2900	4	Bearing - Shutter	24	134-1604	1	Arm, Actuating - Shutter
7	134-2411	2	Bracket and Pivot - Shutter	25	134-0656	1	Spring, Vernatherm Element
8	134-1802	1	Bracket and Pivot - Shutter and Rod (Upper)	26	526-0175	2	Washer, Flat (41/64" ID x 29/32" OD x 1/16" Thk)
9	134-1801	1	Bracket and Pivot - Shutter and Rod (Lower)	27	309-0085	1	Element, Vernatherm
10	134-1817	1	Spring - Shutter Return (Upper)	28	813-0097	2	Screw, Machine - Round Head (#10-32 x 5/16")
11	134-0658	1	Spring - Shutter Return (Lower)	29	853-0008	2	Washer, Lock - External Tooth (#10)
12	518-0004	1	Clip, Rod End - Right Hand	30	134-1610	1	Bracket and Guide - Vernatherm
13	134-1606	1	Rod, Control - Upper	31	508-0002	1	Grommet, Rubber
14	870-0053	1	Nut, Hex (#10-32)	32	815-0235	3	Screw, Cap - Hex Head, Pointed End (1/4-20 x 5/8")
15	150-1358	1	Joint, Ball	33	853-0013	3	Washer, Lock - External Tooth (1/4")
16	518-0006	2	Clip, Rod End - Left Hand	34	870-0178	3	Nut, Sheet Metal - Spring (1/4-20)
17	134-1607	1	Rod, Control - Lower	35	134-1806	1	Duct, Air

D5

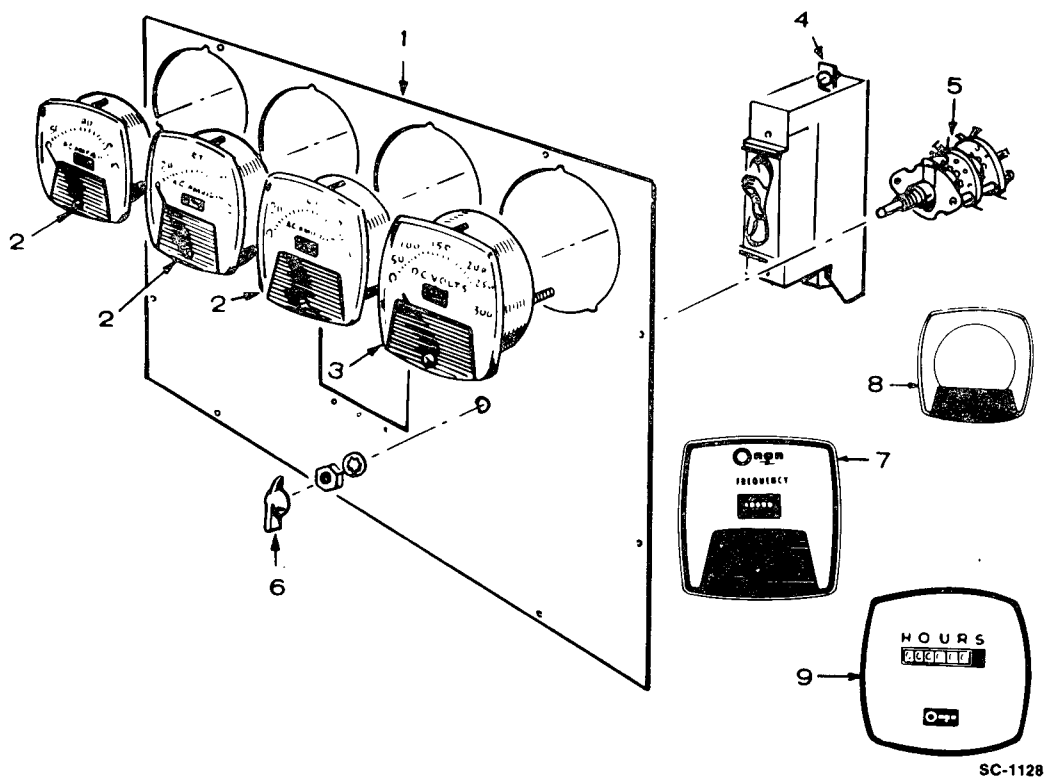
CONTINUOUS GLOW PLUG CONTROL - OPTIONAL



XSC-1116

REF. NO.	PART NO.	QTY. USED	PART DESCRIPTION	REF. NO.	PART NO.	QTY. USED	PART DESCRIPTION
1	315-0433	1	Transformer (Includes Mounting Hardware)	14	812-0082	6	Screw, Machine - Round Head Steel (#8-32 x 3/4")
2	301-4428	1	Box, Control	15	853-0005	6	Washer, Lock - ET (#8)
3	301-4821	1	Bracket, Mounting	16	526-0048	2	Washer, Flat - Brass (.172 ID x 3/8" OD x 1/32" Thk)
4	307-1274	1	Relay	17	815-0203	1	Screw, Machine - Round Head Brass With ET (#10-32 x 7/8")
5	332-2566	1	Strip, Marker (Marked 15, 16, 19)	18	856-0003	1	Washer, Lock - EIT (#10)
6	332-0406	1	Block, Terminal (2-21/32" Lg)	19	871-0010	3	Nut, Hex - Brass (#10-32)
7	332-2567	1	Strip, Marker (Marked 17,18,20)	20	332-0592	3	Jumper, Ground
8	332-0236	1	Block, Terminal (3-3/16" Lg)	21	526-0049	2	Washer, Flat - Brass (.200 ID x 7/16" OD x 1/32" Thk)
9	301-4429	1	Cover, Control Box	22	853-0008	2	Washer, Lock - ET (#10)
10	508-0001	2	Grommet	23	821-0014	4	Screw, Cap - Hex Locking Washer Head (5/16-18 x 1/2")
11	815-0026	2	Screw, Machine - Truss Head (#10-32 x 3/8")	24	856-0008	4	Washer, Lock - EIT (5/16")
12	860-0008	6	Nut, Hex (#8-32)		625-1581	—	Diagram, Wiring
13	850-0025	6	Washer, Lock - Spring (#8)				

AC METER PANEL (HOUSED SETS) — OPTIONAL

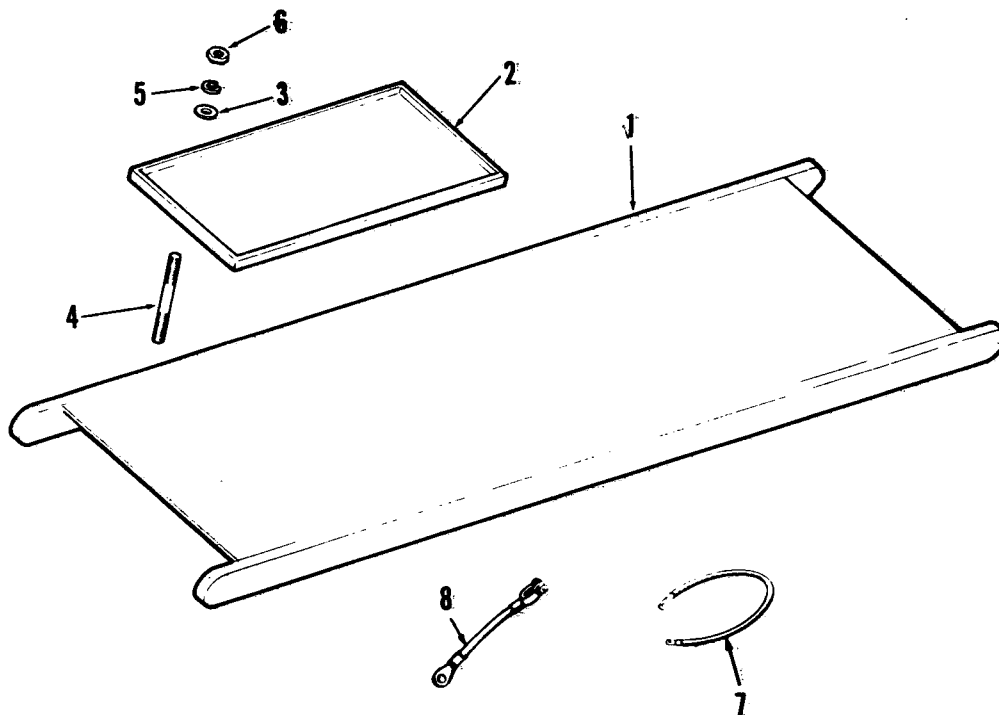


REF. NO.	PART NO.	QTY. USED	PART DESCRIPTION
1	*PANEL, METER - Begin Spec U		
			120/240 Volt, 1 Phase
	301-1554	1	Sets Without Frequency Meter and Running Time Meter
	301-2288	1	Sets With Frequency Meter and Running Time Meter
2	AMMETER, AC (Select According to Scale)		
	302-0460	As Req.	Scale Reads 0-20
	302-0418	As Req.	Scale Reads 0-30
	302-0444	As Req.	Scale Reads 0-35
	302-0419	As Req.	Scale Reads 0-50
	302-0458	As Req.	Scale Reads 0-80
3	VOLTMETER, AC (Select According to Scale)		
	302-0420	1	Scale Reads 0-150
	302-0421	1	Scale Reads 0-300
	302-0422	1	Scale Reads 0-600
4	BREAKER, CIRCUIT (Check Original Part, Select According to Amp. and Voltage; 120 Volt is 1" Wide, 480 Volt is 1-1/2" Wide)		
	320-0002	As Req.	15 Amp., 120/240 Volt
	320-0150	As Req.	20 Amp., 480 Volt
	320-0151	As Req.	25 Amp., 480 Volt
	320-0058	As Req.	30 Amp., 120/240 Volt
	320-0020	As Req.	35 Amp., 120/240 Volt
	320-0153	As Req.	40 Amp., 120/240 Volt
	320-0198	As Req.	45 Amp., 120/240 Volt
	320-0052	As Req.	50 Amp., 120/240 Volt
	320-0195	As Req.	55 Amp., 120/240 Volt
	320-0148	As Req.	70 Amp., 120/240 Volt

REF. NO.	PART NO.	QTY. USED	PART DESCRIPTION
5	308-0012	1	Switch, Voltmeter Selector, 3 Phase Only
6	303-0076	1	Knob, Selector Switch, 3 Phase Only
7	METER, FREQUENCY		
	302-0213	1	60 Hertz
	302-0234	1	50 Hertz
8	302-0448	1	Plate, Meter Face (Used on Early Style Round Meter)
9	*302-0465	1	Meter, Running Time - Begin Spec U (120/240 Volt - 60 Hertz)

* - Spec A through T generator sets order by description giving complete model and serial number.

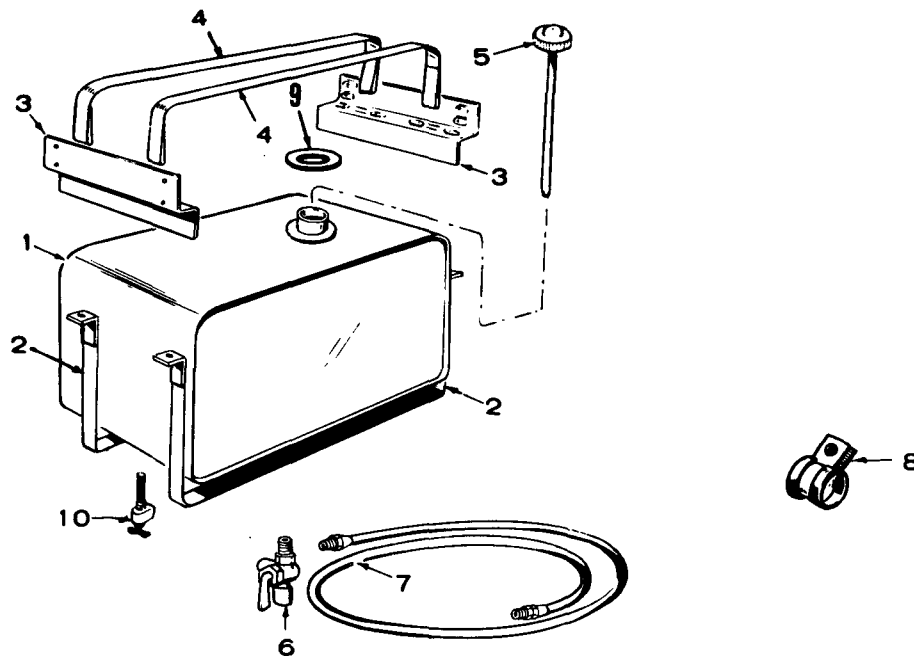
SKID AND BATTERY RACK — OPTIONAL



M-1134

REF. NO.	PART NO.	QTY. USED	PART DESCRIPTION
1	403-0679	1	Skid
2	416-0502	1	Frame, Battery
3	526-0115	2	Washer, Flat (11/32" ID x 11/16" OD x 1/16" Thk)
4	520-0490	2	Stud, Battery Frame
5	850-0045	2	Washer, Lock - Spring (5/16")
6	862-0015	6	Nut, Hex (5/16-18)
7	336-0476	1	Strap, Ground
8	416-0050	2	Cable, Battery

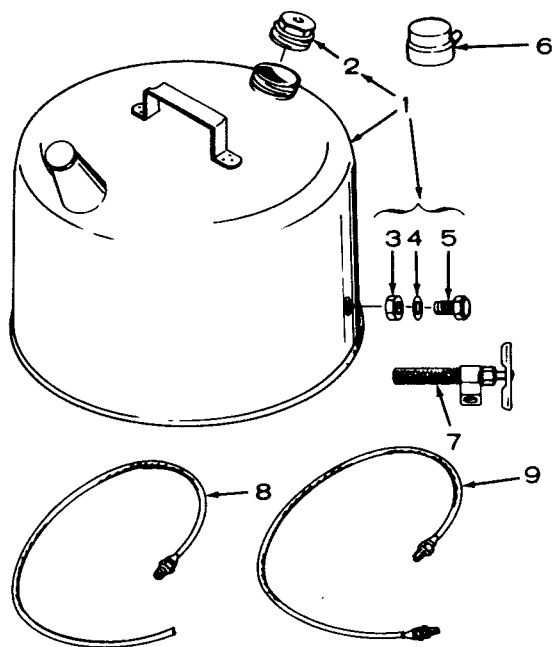
FUEL TANK (HOUSED SETS) - OPTIONAL



FS-1526

REF. NO.	PART NO.	QTY. USED	PART DESCRIPTION
	159-0961	1	Tank Assembly, Fuel - Complete (Includes all Listed Parts)
1	159-0802	1	Tank, Fuel
2	159-0786	2	Strap, Mounting - Bottom
3	159-0789	2	Bracket, Tank Support
4	159-0787	2	Strap, Hold-Down - Top
5	159-0512	1	Cap and Indicator Assembly
6	504-0007	1	Valve, Shut-Off - Fuel Return
7	LINE, FUEL - FLEXIBLE		
	501-0004	1	12" - Tank to Filter
	501-0131	1	24" - Fuel Return
8	332-0050	2	Clip, Fuel Line
9	159-0751	1	Gasket - Tank Filler Neck to Housing Top Panel
10	504-0013	1	Valve, Shut-off - Screened (Tank Outlet)
	HARDWARE, MOUNTING - Not Illustrated		
	800-0009	4	Screw, Cap - Hex Head (1/4-20 x 1-1/2")
	812-0150	8	Screw, Machine - Round Head (1/4-20 x 5/8")
	813-0103	1	Screw, Machine - Round Head (#10-32 x 3/4")
	850-0040	12	Washer, Lock - Spring (1/4")
	332-0942	1	Tie, Cable

FUEL TANK (UNHOUSED SETS) — OPTIONAL

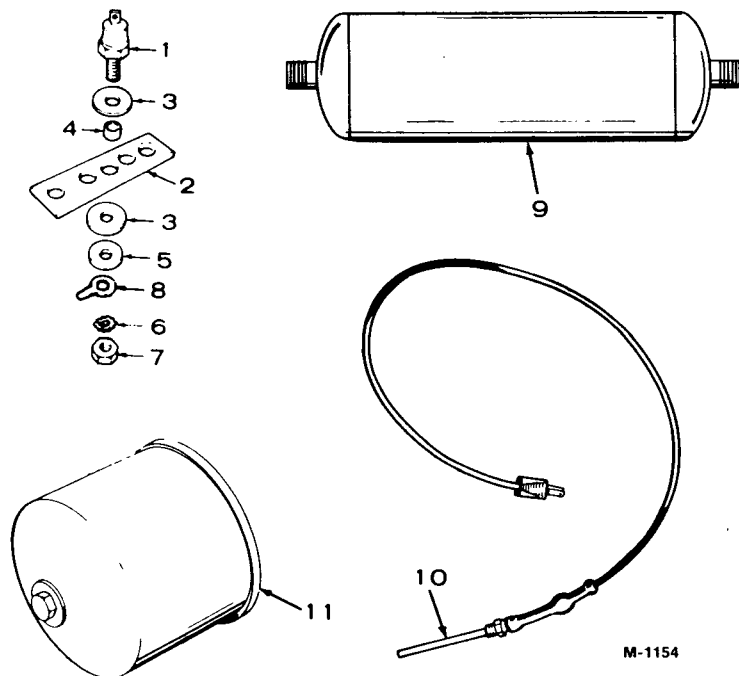


FS-1042

REF. NO.	PART NO.	QTY. USED	PART DESCRIPTION
	415-0129	1	Tank Assembly, Fuel (5 Gallon) Includes All Parts Listed Below
1	415-0126	1	Tank Assembly, Fuel (Includes Parts Marked *)
2	415-0313	1	*Cap, Fill
3	870-0118	1	*Nut, Self Locking (Special)
4	526-0153	1	*Washer, Flat - Copper (1/2" ID x 3/4" OD x 1/16" Thk)
5	415-0047	1	*Fitting, Fuel Tank
6	415-0124	1	Cap, Rain
7	504-0013	1	Valve, Shut Off (Screened)
8	501-0081	1	Line, Fuel - Return (48")
9	501-0009	1	Line, Fuel - Tank to Pump (36")

* - Parts Included in 415-0126 Fuel Tank Assembly.

MISCELLANEOUS OPTIONAL PARTS



M-1154

REF. NO.	PART NO.	QTY. USED	PART DESCRIPTION
1	SWITCH, HIGH AIR TEMPERATURE		
	309-0196	1	Sets Without High Air Temperature Indicator Lamp
	309-0206	1	Sets With High Air Temperature Indicator Lamp
2	309-0195	1	Bracket, Mounting
3	508-0126	4	Washer, Insulating
4	508-0127	1	Insulator, Sleeving
5	526-0021	1	Washer, Flat (17/64" ID x 3/4" OD x 1/16" Thk)
6	856-0006	1	Washer, Lock - EIT (1/4")
7	862-0001	1	Nut, Hex (1/4-20)
8	332-0876	1	Terminal, Ground
9	155-0360	1	Muffler, Critical - Housed Sets (1-1/2" Inlet)
10	102-0558	1	Heater, Oil Base
11	122-0193	1	Filter, Oil - Heavy Duty (5-3/4" Long)